

**Advanced Accounting 5.1 updates  
(1997-2005)  
(with early 2006 payroll changes)**

© 1997-2006 Addsum Business Software, Inc. and © 1985-2003 MGM Holdings

# 1 Advanced Accounting 5.1 updates

## 1.1 Purpose

The purpose of this guide is to document changes that have been made to Advanced Accounting 5.1 since its original release in late 1996. It is therefore in a sense a supplement to the original manual.

Last documentation update relating to 2005 updates: January 13, 2006

Last documentation update relating to 2004 updates: December 24, 2004

Last documentation update relating to 2003 updates: November 14, 2003

Last documentation update relating to 2002 updates: November 25, 2002

Last documentation update relating to 2000-2001 updates: February 12, 2002

Initial release date of this document: January 11, 2002

### How to get help:

Support:  
**801-277-9240**

Sales/non-support inquiries:  
**888-923-3786**

Fax:  
**801-277-4220**

Web:

<http://www.addsuminc.com>

Email:

**[support@addsuminc.com](mailto:support@addsuminc.com)**

## 1.2 Printing help topics

If you are viewing this guide via the on-line help (HLP) file distribution, it is not recommended that you print directly from the HLP file. Instead there is a PDF equivalent which will work much better for

printing purposes and which can also be used for searching. You can download this file by clicking on the link below (or copying and pasting the URL into your browser):

<http://ftp.addsuminc.com/adv/Adv51updates.pdf>

There is a PDF equivalent to the original Advanced Accounting manual. If you are registered user, you may receive a copy of that via E-mail at no charge. Just send a request to [support@addsuminc.com](mailto:support@addsuminc.com) and provide the registered user name and serial number (six digit number which shows up as a splash screen when Advanced Accounting initially loads).

## 1.3 Summary of what is new for 2005

To accommodate 2005 payroll (and early 2006) changes, see the 2005 and 2006 payroll changes and related sections.

### INVENTORY CONTROL

**IC-B** - New option to use average cost rather than last cost when including cost data.

**IC-G** - Ensuring the user cannot press F10 when entering the adjustment reason

### PAYROLL

**PR-B** - new internal logic relating to various state calculations

### SALES ORDER

**SO-B**- New from and thru estimated shipping date range/filter.

**SO-G**- Significant record locking enhancements (multi-user systems will greatly benefit); tax rounding problem resolved

**SO-N**- Up arrow problem resolved

### POINT OF SALE

**POS-D** - clerk logoff resolution (similar to what exists in the 6.1 version)

**POS-E** - sales order history line numbers were not being updated, resolved

### PURCHASE ORDER

**PO-C** - screen display problem when using the [L]list option

**PO-G** - record lock issue resolved

## 1.4 Summary of what is new for 2004

To accommodate 2004 payroll changes, see the 2004 payroll changes and related sections.

### ACCOUNTS PAYABLE

**AP-B** - allow access to individual GL distribution lines; internal changes relating to backing our prior year vouchers

**AP-C** - fix relating to type E (end of month) terms, validation/user interface improved

**AP-N** - newer terms file handling added

**AP-O** - when voiding a check, create an AP aging record

### SALES ORDER

**SO-B** - new option to only show those pending sales orders that are ready to ship

**SO-K** - when scrolling thru history by customer whether from AR-A or SO-K directly, sequence was previously not in customer (code) plus invoice date sequence - fixed

### ACCOUNTS RECEIVABLE

**AR-B** - internal changes related to backing out prior year vouchers

**AR-C** - credits are now saved in the AR check history file; process of applying credits simplified

**AR labels (AR-J)** - some logic changes have been added to correct how these programs determine whether an account is active or not; give user control as to various settings when processing 3 column labels

**AR-M** - new recalculation option

### INVENTORY CONTROL

**IC-A** - new feature that allows you to automatically create locations based on the established DEFAULT record (you create that record within IC-A itself)

**IC-C** - new ability to specify a location range as well as user interface enhancements; new option/report within IC-C for sales detail by date so that you can drill down and see the details behind the monthly summary numbers reported by the main IC-C programs and obtain invoice number, customer code, location, unit, extension and other information.

**IC-E** - new option to skip units that have zero quantities

### PAYROLL

**PR-GL interface (SY-D)** - some logic has been added to help ensure that users have input the latest OASDI/FICA limit.

**PR-B** - recalculates tips/meals when editing pending payroll records, offers choice allowing user not to recalculate withholding when editing; changes made to various state calculations

**PR-C** - shows tips/meals on employee salary and deduction side of the payroll register, as well as WC withholding

**PR-G** - W-2/W-3 updates

### **PURCHASE ORDER**

**PO-B and PO-G** - fix to the from/thru filter (otherwise numbers outside the valid range may print)

### **SYSTEM MAINTENANCE**

**SY-D** - defaults and validation relating to FICA limits

### **UTILITIES**

**UT-H** - new capabilities and options when reporting on notes, mainly sorting and including name/description information relating to the note being printed

## **1.5 Summary of what is new for 2003**

To accommodate 2003 payroll changes, see [2003 payroll changes](#).

These additional programs have been updated for 2003 (updated November 2003):

### **SALES ORDERS**

**Sales order entry (SO-A)** - some further updates have been made to this program relating to prior security permission changes; when printing sales orders was not printing the sales orders in line number order

**Print invoices (SO-F)** - possible erroneous posting previously if a sales order was re-saved in SO-A, and different issue relating to printing an invoice for with no items marked as ready; due date calculation was not happening if user did not review the ship to information

**SO-G posting** - potential 1 cent rounding problem when splitting tax among tax districts

**Release sales orders (SO-E)** - this program was not updating the inventory location file due to a change made in late 2001.

**Quick sales report (SO-M)** - important fix relating to the proper recalculation of the sales order sub-total (for pending order/invoices) where there might have been prior invoices (sub-totals would then not correctly show on this report; general overall and new features/changes.

**Inventory units look-up/display problem:** A problem existed, especially in the "DOS" mode,

whereby when doing an F2/look-up that included unit information, while initially always accurate, the unit information could change based on certain key movement, for example, pressing PageDown/PageUp or thru use of the arrow keys whereby the look-up list in essence would not properly "refresh" with the correct until total. This has been resolved in the 2003 updates starting with (7/8/03). See list below re: programs updated.

### **ACCOUNTS PAYABLE**

**AP-vouchers (AP-B)** - when backing out a voucher in the current year to a prior year, a GL posting problem would result (very old problem that has likely existed since at least the 4.0 version of Advanced Accounting)

**Print AP checks (AP-F)** - when using 6 digit check numbers, the reference to the check number in the AP aging file was truncating the very last digit so that the full check number was then not available for display purposes when running AP aging reports; check discount amount size fix

**AP aging (AP-G)** - internal programmatic changes to ensure certain fields were being correctly initialized (may not have been creating a problem for users)

**Void checks** - internal change to fix check discount amount size

### **BILL OF MATERIALS**

**BOM build (BM-F)** - further change related to one made late in 2002 to ensure proper user selection of "sets" and "units"

### **ACCOUNTS RECEIVABLE**

**Enter/chg customers (AR-A)** - security permission change relating to printing the sales by month report which shows COGS if the user is restricted to not seeing costs

**AR vouchers (AR-B)** - when backing out a voucher in the current year to a prior year, a GL posting problem would result (very old problem that has existed probably since at least the 4.0 version of Advanced Accounting)

### **INVENTORY**

**Enter/chg inventory (IC-A)** - location validation, update relating to customer name display in one of the look-ups, security permission restriction when viewing open PO lists and user is not allowed to see costs

**Print inventory general info (IC-F)** - the program was not displaying the appropriate updated average cost for all locations.

**Adjust inventory (IC-G)** - retain the reason for adjustment as the default for additionally entered adjustments in the same program session; also program was not starting at the top of the list of locations when entering multiple product code adjustments

**Inventory movements report (IC- L)** - new from/thru range option for description field

**Inventory units look-up/display problem:** See sales order section for a further description and see list below re: programs updated.

### **PURCHASE ORDERS**

**Receive P/Os (PO-D)** - average cost by location update, especially when items received were in a negative status (very important update); RNI comparison when determining a PO's status and PO total calculation when invoiced fix

**Inventory units look-up/display problem:** See sales order section for a further description and see list below re: programs updated.

### **POINT OF SALE**

**POS posting** change related to average cost by location; various changes to layaway transactions

### **W-2 printing**

Update to both W-2 programs to not ask question relative to salespeople

### **GENERAL COMMENTS:**

**Inventory units look-up/display problem:** This has been resolved through a change in listg50.lib and the following programs have been updated/re-compiled to take advantage of this change:

*Sales orders:*

BKSOA.SRC  
BKSOPRT.SRC  
BKSOB.SRC  
BKSOD.SRC  
BKSOE.SRC  
BKSOF.SRC  
BKSOG.SRC  
BKSOI.SRC  
BKSOK.SRC

*Accounts receivable:*

BKARA.SRC  
BKARB.SRC

*Accounts payable*

BKAPB.SRC  
BKAPF.SRC  
BKAPO.SRC

*Inventory:*

BKICA.SRC  
BKICB.SRC  
BKICC.SRC  
BKICD.SRC  
BKICDSP.SRC  
BKICE.SRC  
BKICF.SRC  
BKICG.SRC  
BKICH.SRC  
BKICI.SRC  
BKICJ.SRC  
BKICK.SRC  
BKICLOCA.SRC  
BKICTRAN.SRC



*Purchase order:*

BKPOA.SRC  
BKPOC.SRC  
BKPOE.SRC

*Point of sale:*

BKPOSA.SRC  
BKPOSE.SRC  
BKPOSG.SRC  
BKPOSJ.SRC

*Bills of material:*

BKBMF.SRC

*Payroll/special:*

BKPRG.SRC  
BKPRGL.SRC

## 1.6 Summary of what is new for 2002

This is a summary of what has been added so far for 2002 (collectively will be referred to as version 5.12d):

**5.12d release #1 summary - released 4/2/02 (1st quarter 2002):**

(release #1 is available at no charge for users who have purchased updates thru 2001, i.e. 5.12c, and who obtain the update via the web or via E-mail; for users who would rather receive a CD containing these updates, the cost is \$10.00)

**Supplier part code look-up** - this has been added to IC-A. (January 2002)

**Units refresh in IC-A** - when selecting an item from the look-up list, the units initially showing on the screen could reflect inaccurate values until the user pressed ENTER to proceed past the product code field (February 2002)

**ALT-I** - pressing ALT-I a second time while already having pressed ALT-I created GPF's and was a previously known issue but had not previously been fully resolved (March 2002)

**Expiring sales order report** - a new option under "Print reports" in the recurring sales order entry program (SO-I) provides the ability to report on expiring or expired recurring sales orders; parameter error that came up after selecting a report and coming back to the SO-I screen fixed. (January 2002)

**EOM terms** - in programs AP-B, AR-B and SO-F the calculated due date in the event of an "E" calc how in the terms set-up would result in the DOS mode of an incorrect default due date and in the Windows mode, the program would quit. (February 2002)

**Purchase order line items** - when entering the 250 maximum, a user could then not receive that PO under the PO receive program. (February 2002); internal screen issues and "how paid" validation in the receive PO program updated (February 2002)

**Print open S/O list** - issues relating notes attached to message lines: (1) when sorting by product code, a note attached to a message line would show up with the first portion of the note as the being the product code (fixed); (2) when sorting by customer code, a "file not opened" message could be received because the BKSONOTE file was not being opened; also an internal line number relating to the appropriate message line was not being referenced so that the note would not display correctly (all

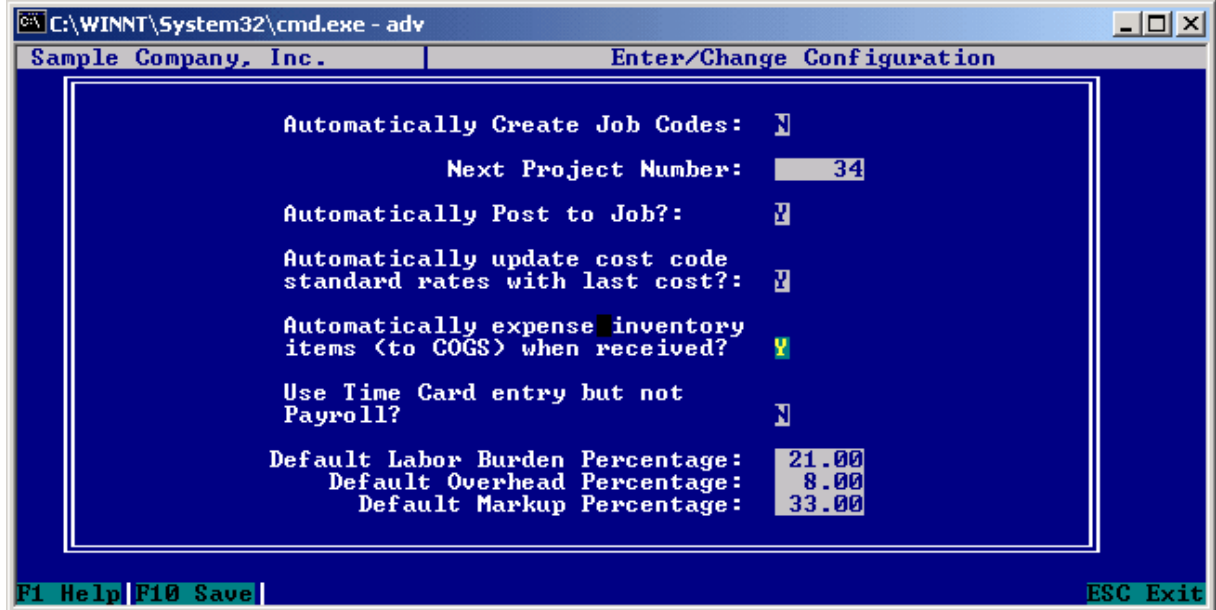
fixed). Comment: the open S/O list does NOT currently print notes attached to product codes even when the "print detail" option is selected. Only message lines or notes attached to message lines currently are printed and only when sorting by customer. (February 2002)

**Addsum utilities** - the synchronization utilities has been changed to offer the ability to automatically delete any and all stranded sales order and purchase order line items (and without regard to product code which is important in connection with potentially stranded message lines or notes attached to messages lines); several internal improvements (February 2002); new utility in the Inventory utilities section allowing a user to merge one inventory code into another (March 2002); the balance GL to inventory utility updated to reflect 5.12c changes and updated to be able to select GL account-dept combinations rather than just GL accounts. (March 2002)

**File reindex** - this program would sometimes not allow a user to reindex a file because of a lack of disk space even though the user may have ample available disk space - user can now override and proceed to reindex (February 2002)

**Inventory availability (IC-D)** - re-synch to location units when doing reorder level, etc. comparison (March 2002).

**Receiving PO's when automatically expensing inventory via JC:** In the job cost configuration, there is an option for "automatically expensing inventory" which was disabled in early 1997 due to some problems that some users were having when using that option. That option has been re-enabled. So when answering "Y" to the question "Automatically expense inventory items (to COGS) when received?" (see screen clip below), the program will expense type "R" items and will accordingly not update inventory units (nor average cost). When answering "N" (and previously regardless of what the answer was), the purchase order receipt program will post to the inventory asset associated with the item's location and update units and average cost.



**5.12d release #2 summary - (released July 2002 as a cumulative update with changes in #1):**

**Weights:** In inventory option A, there is now an entry field for WEIGHT which can be optionally used to input and item's weight. (This can then potentially be used in the SO module to calculate the weight of an order and more importantly in the PO module to be potentially used to allocate freight/tax thru via a new/yet to be added PO receipts/transaction file.)

**940 report:** several new features, was locking history files (fixed), provide ability to report on prior year and regardless of whether payrolls had been processed since the 1st of the year (gives user the ability to literally do a 940 for any past year and include even terminated employees), accumulate SUTA amounts to provide a default number for SUTA paid, fix screen reference

**941 report:** somewhat like the 940 report program, allow the user to run the report for a prior year, especially important when running a 4th quarter/prior report after that W-2's have been run and employees terminated, numerous internal changes

**Purchase order receipts:** when making invoice price changes, items could appear that had previously been received in full or which had not been received at all.

**Payroll history report:** enhanced to allow for a from/thru division range.

**Quotes transfer:** previously this program was not allowing a note attached to a message line to be transferred.

**Sales order entry:** maximum possible is actually 249 rather than 250, added internal support in the event limit is reached; inventoriable items could be added to a sales order without a location.

**Purchase order entry:** maximum possible is actually 249 rather than 250, added internal support in the event limit is reached; inventoriable items could be added to a sales order without a location; duplicate purchase orders number could be created under certain situations.

**Receiving PO's when automatically expensing inventory via JC:** related to re-enabling this in the earlier release, when using type "N" (non-inventoriable) items, postings were going to the clearing account; "received quantities" were also not being updated when the JC expense flag was enabled. Unrelated to JC, type "N" items could be creating harmless but unnecessary inventory location (BKICLOC) records.

***5.12d release #3 summary - (released August 2002 as a cumulative update with changes in #1 and #2):***

**Clear data (BKCLRDAT):** was not working when clearing data, support for other files that were not previously being cleared or deleted added (August 2002)

**Detail trial balance (GL-E):** balance forward handling with respect to income/expense accounts significantly enhanced, prior fiscal year end closing amounts shown in current retained earnings account when running a detailed trial balance and the balance forward amounts only include appropriate year to date balances for income/expense accounts to resolve the illusion that previously existed (that income/expense accounts were not getting cleared) and to help preventing users from trying to adjust their GL transaction file in any way (August 2002)

**File reindex** - the newer reindex program was requiring that the user input the file name and company code twice because of some internal issues; program enhanced to be able to make a back-up copy of the file being reindexed (August 2002)

**Inventory maintenance (IC-A)** - in the event a non-inventoriable item for some reason had some unit on hand or other value, add some logic to the synchronization routine to zero out any and all unit values (other programs in the system that have inventory look-ups won't reflect this change until they are re-compiled); when deleting an inventory item, add additional checking to make sure that the item (regardless of "type") isn't on a pending sales order, purchase order or bill of material before even allowing it the ability to be deleted. (August 2002)

**Main menu program** - the set date/time option has been disabled (because users should not be selecting that and nothing in Advanced Accounting requires it) and the program changed internally to

call the new file reindex program (August 2002)

**Reclose prior years (SY-L)** - make the "roll" beginning balance question relating to the GL transaction file a "toggle" option so that the user never has to make the decision whether to actually do this and therefore help eliminate the chance that a user accidentally clears their GL transaction file - somewhat also related to the GL-E change (August 2002)

**AR aging (AR-F)** - when doing an A/R aging and choosing customer totals only, program was not performing as quickly as the detail/open items only and could also provide different totals (related not to software integrity but past user data integrity issues) (August 2002)

**Build/unbuild process (BM-F)** - users historically have been confused between the "number of sets" and "units built" and for the vast majority of users, these numbers should be the same, so in this program as now changed, the user has to press F5 to enter the units built which are otherwise set equal to the number of sets; further checking added so that if the number of sets and the units built are not the same, the user is asked whether that is really what is desired; also the F3/display build history has been enhanced to provided a larger display and more information including the location and the number of sets and units built. (August 2002)

**Run POS register (POS-A)** - when using the change salesperson function key (F9), a user could enter the newly desired salesperson but instead of entering the password, press ESCape and the program would change to the newly entered salesperson code (resolved); when doing an old sale (F7) or reprint (F8) program was allowing the user to bring up voided transactions (June/August 2002)

**5.12d release #4 summary (includes changes in #1 , #2 and #3):**

**Inventory maintenance (IC-A)** - turn off the F5/F6/F7/F8/F9 keys (better ways to search include using ALT-I and F2 in the product code field - these provide more options and will never unnecessarily lock a record).

**Enter/change voucher (AP-B)** - if the mouse is turned on (see Set Configuration), users could bypass vendor code, voucher number and invoice date; added additional validation to prevent this from occurring. This was not an issue in the Windows mode, only the DOS mode. NOTE: we generally recommend that DOS users turn off the mouse under Set Configuration.

**AR record payments (AR-C)** - improve program flow concerning regarding the initial payment description including any backout reason.

**Run POS register (POS-A)** - F7/reverse could create a zero numbered invoice.

**Print bill of material (BM-B)** - if an item had no units on hand of any kind, average cost would show as zero on this report, even though average cost values were available in the system - change to look for average cost values in the inventory location file in the event the computed average cost is zero.

**Purchase order receipts (PO-D):** the overall "last cost" of an item was not being updated (even though the location's average cost was) creating a problem in that (a) the last cost reference of the CTRL-K option in IC-A would not show the last overall cost and (b) when entering a purchase order for relating to a vendor/item that did not have a catalog cost, the program then would not be able to bring in the overall last cost.

**AP check printing (AP-F):** when the system was printing a "voided" check (whether dot matrix or laser), the city/state/zip relating to the prior vendor's address in a check run would be printed rather than the actual vendor's city/state/zip.

**Generate recurring G/J trans (GL-N):** was allowing "out of balance" entries saved in GL-M to be posted.

**BM-F and PO-D:** Inventory movements dollar amounts could be inaccurately stated by not taking into account previously posted amounts (e.g. price changes in PO-D).

No updates made at 11/25/02 - no year end/payroll 2002 update required. See 2003 payroll changes however for payrolls starting on January 1, 2003.

**User bulletin:**

Users should make changes under system maintenance option M (SY-M) add/chg/del related fields as follows:

CUSTOMER CODE: add BKAR.CHKH.CODE, instances "M" to the end of this list

PRODUCT CODE: add BKIC.TRN.PCODE, instances "M" and BKIC.VND.PCODE, instances "M" to the end of this list

IMPORTANT: this should be done in each "company" that you actively use.

**Developer notes:**

New program BKSOIEXP is called from BKSOI

New key added to BKICVEND

Weights are being saved in the BKICMSTR field, BKIC.PROD.TO.

## 1.7 Summary of what is new for 2001

This is an overview of 2001 changes (some of the changes made were sweeping, impacting many different programs for similar things and therefore this summary will be more topical in nature rather than containing program by program information - see also however the Special topics section for more detailed information on some features including program specific information):

### **AVERAGE COST BY LOCATION**

This is an extensive internal change which moves essentially all of the average cost tracking from the inventory master record to each location. This change is essential for accurate cost tracking when users use different GL asset accounts for their locations (as it was otherwise impossible to support the GL through an inventory detail report) as well as for commission and other cost of goods sold tracking by location or department. On multi-user systems, this change also greatly reduces record contention/locking in the inventory master (BKICMSTR) file and also eliminates synchronization problems that in the past could occur between the inventory master and the inventory location files. The inventory option G (adjust inventory program) has been completely re-written as a result of this change and all programs that compute or refer to average cost have been updated.

### **MASTER LOCATION MANAGEMENT**

Previously there was no mechanism to manage master locations in terms of adding a new one nor adding or deleting them en masse. New master location management functions provide this ability and

users can no longer inadvertently add an on the fly location.

## **PAYROLL**

W-2 forms (continuous and laser) and W-3 forms changed to comply with many IRS related changes

New W-2 feature to be able to print any deduction into Box 14 with user defined description; new ability to select an employee range when printing W-2's (ideal for "re-prints" in the event only one or two W2's are incorrect or didn't print correctly for some reason)

The "Pay summary" option in the payroll history report was not including commissions/bonuses and this has been fixed.

Updated program logic and/or tax table updates for the following states/jurisdictions that include: California, DC, Maine, Maryland, Michigan, Missouri, New Mexico, North Carolina, North Dakota, Oregon, Rhode Island, Utah and Vermont.

## **USER PERMISSIONS**

New "add/chg/del User Permission" option allows users to control user abilities like never before and represents a major new capability of the system. User permissions can be set by individual logons or an entire security level with the ability to fine tune access/abilities/rights within various programs. Users with multiple offices/locations have the ability to limit access to certain departments or inventory locations. System managers/administrators can now control whether users can change or override credit limits, whether they can delete line items or change salesperson codes or terms, whether they can view credit card information, etc.

## **USER CAN CHANGE PASSWORD**

New program option that allows end user to directly change their own passwords which encourages users to change their passwords more frequently and which eases administrator burden.

## **FRONT END MENU CHANGES**

Front end menu program changes to resolve several security problems and resolve several other problems.

## **INVENTORY MOVEMENTS REPORT**

This report program has been completely overhauled with new features to sort by post date and number.

## **MISCELLANEOUS/RELATED CHANGES**

(this is not a list of all programs that have been changed - many, many programs have been changed/updated that are not listed here as result of the average cost and user permission changes)

**GL-K** Check register record locking related change

**BKAP1099** 1099 program updated for IRS changes

Salesperson look-up written (impacts **AR-A**, **SO-A**, **SO-I**, **AR-I** etc.) to resolve problem of Windows mode problem whereby the salesperson look-up list would stop if it encountered an employee who had been terminated

**AR-A** Improved credit card validation

**AR-E** minor change to help speed printing

**BM-D** Fix endless loop problem when running a range of items or when running all items

**IC-A** locations can no longer be added on the fly (there is a new program under IC-M where master locations are managed, deletion of price matrix records if inventory record is not saved, multi-supplier entry (ALT-M or available thru the PageDn menu)

**IC-L** inventory transfer date was not being checked for the allowable fiscal year

**PO-A** No price change is allowed if a quantity has been received on a line item (very important change); do not allow user to change product codes on existing line items; remove all unnecessary locks on BKICLOC and BKICMSTR

**PO-D** resolve problem of being able to close a PO when a note was attached to a message line

**POS-B** enlarged subtotal and total fields; new logic to accumulate payment types, fix for key number

**PR-A** clarify use of tips fields (see also PR-B)

**PR-B** Idaho & Missouri changes (mid-year); cannot combine meals and tips together otherwise W-2's cannot properly segregate SS tips

**PR-C** - type 'B' variable change for BKPRTIME (for code consistency)

**PR-D** X-out SSN option

**PR-N** one of the report options was not including bonuses/commissions

**FUTA/SUTA Wage Report** overhauled, added support to round wages, option to export to file, fix for reporting relating to tax preferred items

**SO-A** - put SO printing into separate program (BKSOPRT), which for now is accessed only by SO-A for maintenance and because of BKSOA size; fixed customer code validation issues when changing customer codes on an existing sales order; do not allow user to change product codes on existing line items; remove all unnecessary locks on BKICLOC and BKICMSTR; add option to show only the last 4 digits of a credit card number when bringing into a message line; add credit card validation similar to that in AR-A; Windows mode warning;

**SO-F** Allow freight only invoice from SO-A, remove the temporary file lock BKSOLOCK as unnecessary allowing simultaneous printing by any number of users on a multi-user system

**SO-G** added further protection against duplicate invoice numbers being posted/saved into the history file

**SO-I** do not allow negative quantities, updated with features similar to SO-A including option to show only the last 4 digits of a credit card number, add credit card validation

**SY-F** allow departments to be created even if some already exist; do not allow deletion of an account that has a balance; program logic changes

**SY-L** in the year end routine, fix for rolling up the beginning balances of any untransferred sales taxes, for both sales taxes and commissions roll up to the first fiscal year month rather than January (significant for companies that are not on a calendar year); checking to help prevent running SY-L

more than once in a fiscal year.

**BKBEGINV** dovetails with changes made to IC-G (this is however a program that should be used by new users only)

## 1.8 Summary of what is new for 2000

This is an overview of 2000 changes:

### GENERAL LEDGER:

#### GL-B Enter/Chg/Print G/J Entries

- Changes regarding file handling and locking of the note files (6/30/00)

#### GL-G Print Financial Statements

- Enhanced the zero-only option to apply without regard to what columns are selected (2/29/00)
- Do not ask question about doing a consolidated statement if there are no records in BKGLCOA (2/29/00)
- Skip question about including a beginning balance if printing an income statement (2/29/00)

#### GL-H Print G/L Code & Description

- Added option to exclude inactive accounts (2/9/00)

### ACCOUNTS RECEIVABLE

#### AR-A Enter/Change Customers

- Fix re: program was not deleting blank records (1/24/00)
- Fix: re: getting blank customer codes (2/17/00)
- Added new key (BKAR.INV.CUSDTE) for displaying customer invoices and line items (the invoice history list now sorts by customer + invoice date and the invoice lines list now sorts by customer + invoice number + invoice date) (4/17/00)
- Added product code to the Invoice Lines listing (5/30/00)
- Needed a noclr on a save to BKARCUST (10/17/00)
- If user is viewing the customer information only, do not allow him/her to change credit cards, alt addresses, or alt contacts (10/18/00)

#### AR-B Enter/Change Vouchers

- Fix: the function to check if a G/L code is active was only working when a G/L code was selected from the look-up list (4/6/00)

#### AR-C Record Payments

- New file (BKARCHKH) to record all customer payments (8/28/00) – See new report option A/R-O

#### AR-E Print Statements



- Changed the size of the stmt\_desc to 25 (was defined as size 17; thus the reason why the description appeared to be "cut off" on statements)

### **AR-O Credit Analysis Report**

New program option!

## **SALES ORDERS**

### **SO-A Enter/Chg Sales Orders**

- Change relating to sales tax calculation to avoid rounding up too much (1/13/00)
- Fix if a sales order was saved with no line items, the program would save out a blank BKARINVL record and in the process create blank BKICMSTR and BKICLOC records (2/22/00)
- Set up S/O location on the first screen to be the default location for line items; added logic to keep track of whether or not a location has been entered per line item basis in order to determine if a value should default into the line item location (3/1/00)
- Fix: missing ^O Cust Options in one of the function lists (4/6/00)
- Added logic to protect against the 250 line limit (4/11/00)
- Line counter implementation – new fields BKAR.INVL.LINE (internal line counter to keep the line items in the order they were entered) and BKAR.INVL.CSLNE (customer line counter) (4/18/00)
- Changes to routines that update inventory: find the inventory and location records regardless of whether or not they are in memory; also, inventory was not being updated correctly when changing the location of an existing line (8/30/00, 10/24/00)
- Added record lock checking when obtaining the product and location records (11/1/00)
- Fix: the new loc\_entered variable needed to be cleared (12/6/00)
- Turned of ALT-1 when entering a note (see BKNOTES change) (12/11/00)

### **SO-B Print Open S/O List**

- Added option to restrict report to only those items that have an invoice number (when sorting by other than product code) (4/25/00)

### **SO-C Print Packing Slips**

- Print customer line counter on packing slip; use new key BKAR.INVL.INVCT (invoice number + internal line counter) to read the line item file (4/18/00)

### **SO-F Print Invoices**

- Change relating to sales tax calculation to avoid rounding up too much (1/13/00)
- When running this program from S/O-A, set the "Verify ship/due dates/ship attn" flag to "N" so that the system will automatically assign the ship date as the invoice date and not ask any further questions (1/28/00)
- Print customer line counter on the blank paper invoice; use new key BKAR.INVL.INVCT (invoice number + internal line counter) to read the line item file (4/18/00)

### **SO-G Post Invoices**

- Try to ensure that sales order headers that don't have pending line items don't get posted (4/5/00)

### **SO-I Enter/Change Recurring S/O**

- Added all modifications/changes applicable to S/O-I that have been made to S/O-A through 12/31/00

**SO-J Generate Recurring S/O**

- Added sales order (RSO) range (2/1/00)
- Added fix for rounding when calculating sales tax

**SO-K Display Invoice History**

- When reporting by product code, do not print the header/footer information if there are not any line items to print within the requested range (2/9/00)
- Display customer line counter field on the line item screen; use new key BKAR.INVL.INVCT (invoice number + internal line counter) to read the line item file (4/18/00)

**SO-N Reprint Invoices**

- Changed ESC/INT traps (4/13/00)
- Changed the pre-printed invoice to only print to 80 characters, not 81 characters; otherwise, wrap problems can happen with the newer dot matrix printers (4/13/00)
- Print customer line counter on the blank paper invoice; use new key BKAR.INVL.INVCT (invoice number + internal line counter) to read the line item file (4/18/00)

**ACCOUNTS PAYABLE****AP-A Enter/Change Vendors**

- Fix: duplicate vendor codes were being created when adding a new vendor (2/17/00)
- Removed inventory location from P/O listings (3/1/00)
- Added product code to P/O Lines listing (5/30/00)
- If user is viewing the vendor information only, do not allow him/her to change alt addresses or alt contacts (10/18/00)

**AP-B Enter/Change Vouchers**

- Fix: when pressing ESC from the vouchers look-up, the voucher description was being cleared (4/3/00)
- Fix: the function to check if a G/L code is active was only working when a G/L code was selected from the look-up list (4/6/00)

**AP-D Pick Vouch/Inv to Pay**

- Added error checking in the event that BKPMTAP is open by another user (3/1/00)

**AP-R Unpaid A/P Vouchers Report**

- Changed the key name in one of the findv's (2/8/00)
- Improved screen display and report header (12/31/00)

**PURCHASE ORDERS****PO-A Enter/Chg Purchase Orders**

- Fix: if a purchase order was saved with no line items, the program would save out a blank BKAPPOL record and in the process create blank BKICMSTR and BKICLOC records (2/22/00)
- Fix: when user went to the first screen (^F option in line item entry), the program header became blank (2/22/00)
- Allow location entry on a line item basis – the P/O location on the first screen will now be used as the

"default" location; revised screens for consistency; added day of week info for Ord Date and ERD; removed location from BKPOA1A (top part of screen when entering line items); added logic to keep track of whether or not a location has been entered per line item basis in order to determine if a value should default into the line item location (3/1/00)

- Added logic to protect against the 250 line limit (4/11/00)
- Fix: program was not updating inventory correctly when changing the location or product code of an existing line item (10/24/00)
- Added record lock checking when updating inventory units (11/1/00)
- Fix: the new loc\_entered variable needed to be cleared (12/6/00)
- Turned off ALT-1 when entering a note (see BKNOTES change) (12/11/00)

#### **PO-D Receive P/Os**

- Do not warn user about selling price if product is set to a "P" status (2/9/00)
- Multiple location handling (now using P/O line item location instead of P/O location) (3/1/00)
- Turned off mouse in DOS mode; do not allow user to "click off" of fields (6/22/00)
- Sped up checking of duplicate invoices (6/22/00)
- Fix: problem of multiple postings to the G/L going awry (10/10/00)
- Fix: COGS problem with negative unit items (happened when the last cost was a different number than the average cost and, e.g., the first item on the P/O being received had a negative quantity) (12/31/00)

#### **PO-E Display P/O History**

- Display location on a line item basis (3/1/00)

### **INVENTORY CONTROL**

#### **IC-A Enter/Chg Inventory**

- If a product is set to a "P" status, do not allow user to enter the price base or price matrix; also added restrictions for entering G/L sales accounts if product is set to a "P" status (2/9/00)
- Display the P/O line item location instead of the P/O location in the P/O lines listings (3/1/00)
- Added customer name to sales order/invoice line item lists and added vendor name to P/O current/received line items lists (4/14/00)
- Added new key (BKAR.INVL.PCESD) for displaying invoice line items (the list now sorts by product code + invoice date) (4/17/00)
- Fix: getting record lock on BKSYNLUP when checking for notes – possibly connected to entry/posting of G/L transactions – concurrent with changes made to G/L-B (6/30/00)
- Fix: customer name sometimes did not show in the sales order line item list (6/30/00)
- Added a date entry filter to the invoice line items list (7/3/00)

#### **IC-E Print Physical Check**

- If printing UOH and UOSO in separate columns, set the page format to "wide" regardless of where the output will be going to (5/30/00)

#### **IC-G Adjust Levels to Phys**

- Use P/O line item location instead of P/O location (3/1/00)

### **POINT OF SALE**

#### **POS-A Run POS Register**

- Change relating to sales tax calculation to avoid rounding up too much (1/13/00)

- Changed the way the screens are loaded and set active (2/2/00)
- Fix: needed a saves/redisplay after a warning message (12/31/00)
- Fix: page counter not incrementing when printing 80 column receipt; need to print the product header on each page (12/31/00)

**POS-D Force Logoff from Reg**

- Fix: password shows under some circumstances (1/14/00)

**POS-E Post POS Transactions**

- Fix: if voided sale, just delete the BKPOSPST record (3/13/00)
- New F7 feature to give the user the ability to add a ticket to post (3/31/00)

**PAYROLL****PR-A Enter/Chg Employees**

- Removed update params in openv's (1/19/00)
- New CTL-T function that allows a user to gain access to the YTD/QTD amounts (1/19/00)
- Added Missouri as a state that can have a status type of B (married, both spouses work) (4/4/00)
  - Enter Pay Info
    - Colorado now requires the state withholding taxes to be rounded (1/4/00)
    - Illinois exemption is now 2000 (was 1650) (1/5/00)
    - Logic/other updates to: AR, DE, CO, GA, KS, KY, MA, MD, MN, MO, MS, MT, NC, NE, NM, OK, OR, RI, SC, UT, VT – significant changes to AR and OK (4/4/00)
    - Michigan change – rate is now .042% (4/11/00)

**PR-D Print Payroll Checks**

- Fix: non-laser checks were printing one line higher than A/P checks – added extra line at top (2/17/00)
- Added Option to X-out SSN (12/13/00)

**PR-F Print Quarter Info**

- For FUTA/SUTA Wage List: Need to take into account tips and meals in wages when getting numbers from history (12/31/00)

**PR-G Print W-2's & W-2 History**

- Laser Checks Only: Added SDI back on the form, but it will only print it has a value other than zero (3/10/00)

**SPECIAL IRS REPORTS****BKAP1099 Print 1099 Forms**

- Change to print address 2 instead of address 1 if address 2 is not blank (1/25/00)
- Fix: laser forms were "drifting" (1/26/00)

**SYSTEM MAINTENANCE****SY-C Enter/Chg Password Info**

- Program was not opening BKSVMSTR (2/20/00)
- Changed opens from lock F's to lock R's (otherwise new users cannot be added while others are in the system) (3/7/00)

**SY-D Enter/Chg PR GL Interface**

- Changed validation in connection with the accumulation options to correspond to the possible choices

(5/9/00)

#### **SY-K Year End Routines**

- Added error checking for BKSVMSTR; new checking to try to ensure that a user doesn't run this program multiple times in the same fiscal year (3/2/00)

#### **SY-L Reclose Prior Years**

- Added validation when entering the type of close (2/9/00)
- Added record lock handling for BKSVMSTR (4/3/00)

#### **Other Changes**

- 1) BKNOTES - Prevent user from pressing ALT-1 during entry of a note (this would otherwise give a user who has limited access to the system full access) (12/11/00)
- 2) NEWMERGE – Skip FILEDFLD.HLD if it does not exist; added open error checking (5/1/00)
- 3) Addsum Utilities: BKUNPOST (Unpost Invoices) – Fix: if/endif problem would cause program to stop when updating salesperson (5/23/00)
- 4) Programs re-compiled only for BKARINV and BKARINVL structure changes (4/18/00):  
BKARCOLL, BKARI, BKSOD, BKSOE, BKSOH, BKSOL, BKSOM, BKSOO, BKSOP, BKCLRDT

## **1.9 Summary of what is new 1997-1999**

This information has previously been published for each separate year. However in the [reference](#) section of this guide, we have put together a compilation of all of those updates. Information as to changes made each year is also available at:

<http://www.addsuminc.com/advup.htm>

## **1.10 2006 payroll changes**

### **1.10.1 Federal**

The OASDI taxable wage limit increases from \$90,000 to \$94,200. The tax rate remains 6.2% (with a matching employer contribution).

Medicare taxable wage limit remains unlimited and the tax rate remains 1.45% (with a matching employer contribution.)

The federal income tax exemption increases from \$3200 to \$3300.

Other tax tables also change as of January 1, 2006. Payroll table changes need to be made (the payroll update includes these tax tabl changes).

The FUTA rate/limit remains unchanged.

### **1.10.2 State**

A number of states have had changes as of January 1, 2006. Some of these involve internal hard

coded program logic and others relate to "table" changes (an updated table is included with the update). States with internal changes include Colorado, Idaho, Iowa, Minnesota, Montana, New Mexico, North Dakota, Oklahoma, Rhode Island, Vermont, Virginia and Wisconsin. If you have any question about your state, please contact us.

## **1.11 2005 payroll changes**

### **1.11.1 Federal**

The OASDI taxable wage limit increases from \$87,900 to \$90,000. The tax rate remains 6.2% (with a matching employer contribution).

Medicare taxable wage limit remains unlimited and the tax rate remains 1.45% (with a matching employer contribution.)

The federal income tax exemption increases from \$3100 to \$3200 (first change since July 1, 2003).

Other tax tables also change as of January 1, 2005.

The FUTA rate/limit remains unchanged.

### **1.11.2 State**

Various state changes were made in 2005 and have been incorporated into the updates.

### **1.11.3 Arizona set-up issues**

Based on which percentage the employee has elected on the Arizona A-4 form (and these rates changed on January 1, 2005), input that rate in PR-A in the field called "St" which represents the state exemption number. This is different than for most states. The number you input into this field should correspond to the percentage (e.g. 10, 19, 23, 25, 31 or 37) elected by the employee. The PR-B program will then take that number and divide it by 100 in computing the appropriate state income tax withholding.

## 1.12 2004 payroll changes

### 1.12.1 Federal

The OASDI taxable wage limit increases from \$87,000 to \$87,900. The tax rate remains 6.2% (with a matching employer contribution).

Medicare taxable wage limit remains unlimited and the tax rate remains 1.45% (with a matching employer contribution.)

The federal income tax exemption remains at \$3100 (not changed since July 1, 2003).

There are no federal tax table changes as of January 1, 2004.

The FUTA rate/limit remains unchanged.

W-2 and W-3 forms have changed for 2004 requiring an update.

### 1.12.2 State

A number of states have had changes as of January 1, 2004. Some of these involve internal hard coded program logic and others relate to "table" changes (an updated table is included with the update). As of January 2004 changes have been made to accommodate these changes (some of which may have occurred earlier, for example in the last half of 2003):

Kentucky - withholding allowance programming change

Maine - table change

Maryland - changes may be necessary but none yet made

Michigan - withholding tax rate change, was initially be effective 1/1/04 but it appears now to be a 7/1/04 change (program has been changed so this will activate when it becomes time to do so)

Minnesota - table change and withholding allowance programming change

Missouri - changes may be necessary but none yet made

Montana - tax code MT0 needs to be changed, withholding allowance programming change also made, also Montana now has a rounding requirement, programming change has been made

New Mexico - withholding allowance programming change, table change

New York - table change

North Carolina - withholding allowance programming change

North Dakota - withholding allowance programming change, table change

Rhode Island - changes may be necessary but none yet made

Vermont - withholding allowance programming change, table change

## 1.13 2003 payroll changes

### 1.13.1 Federal

The OASDI taxable wage limit increases from \$84,900 to \$87,000. The tax rate remains 6.2% (with a matching employer contribution).

Medicare taxable wage limit remains unlimited and the tax rate remains 1.45% (with a matching employer contribution.)

The federal income tax exemption has increased from \$3000 to \$3050.

The federal income tax tables have also changed as of January 1, 2003.

The FUTA rate/limit remains unchanged.

(1) For every division, increase the social security medicare limit; also update your SUTA, workers compensation and state disability rates as of January 1.

(2) With the [2003 update](#), a new BKPRFTAX.B is provided which contains federal/state tax table updates and changes.

(3) Make any health insurance, retirement plan, cafeteria plan deductions, etc. that might change as of January 1.

Interim change effective July 1, 2003:

The federal tax table has been changed. Users can make this change by downloading the latest update.

The federal income tax exemption has increased from \$3050 to \$3100.

### 1.13.2 State

There are changes in a number of states as of January 1, 2003. Some of these involve internal hard coded program logic and others relate to "table" changes (an updated table is included with the update).

California - table changes and internal logic changes to support table based changes

Connecticut - support for filing status F, other major changes (not necessarily related to 2003 but needed for appropriate withholding); Connecticut rates changed 3/1/03 and again 7/1/03 (latest updated includes changes effective 7/1/03)



Kentucky - standard deduction change

Louisiana - significant internal logic change to comply with LAC 61:I.1501.

Oklahoma - significant programmatic changes and rate/bracket changes

Massachusetts - rate and personal exemption programming changes (included in July 2003 update)

Maine - table change

Michigan - rate and personal exemption programming change

Minnesota - withholding allowance programming change

Missouri - standard deduction programming changes (also change made in PR-A made to allow a "B" entry under M/S - see [Missouri/Mississippi 2003 special topic](#) for further information)

New Mexico - withholding allowance programming change

North Dakota - withholding allowance programming change

Rhode Island - withholding allowance programming change

Vermont - withholding allowance programming change

### 1.13.3 Louisiana set-up issues

Use of some of Advanced Accounting "special exemption" fields is critical for the withholding to work properly. In the state of Louisiana's Revenue Information Bulletin No. 02-022 dated December 16, 2002, two examples are provided relating to a married employee claiming dependents and a single person claiming no dependents. In order for the withholding to work properly, here is how the employee might be set-up in Advanced Accounting 5.1:

Example 1 - married employee, claiming self, spouse and two children

Note that the "St" state tax exemption is used for Louisiana's personal exemptions, and should be limited to 0, 1 or 2 (the program will allow you to input more than 2, but the updated PR option B will still act as though a "2" was input. A value of 0 or 1 in this field will produce the same results. The field "SSEx" is where dependent credits can be entered and this can be zero or greater and the withholding is in part dependent on the number entered here.

| Num                | First Name & M.I. | Last Name         | NOTES | P/R       | Division |      |        |
|--------------------|-------------------|-------------------|-------|-----------|----------|------|--------|
| 100                | KELLY R.          | MILLER            |       |           | 1-1      |      |        |
| Address            |                   | City, State & Zip |       | M/S       | Pay Type |      |        |
| 21020 UAN DYKE RD. |                   | SOMEWHERE LA      |       | 1         | 1        |      |        |
| Phone Number       | Soc Sec Num       | Start Dt          | T     | Fed Added | St Added | SSEx | St Exm |
| 206-555-2365       |                   | 01/10/91          | N     | 2 0.00    | 2 0.00   | 2    | 0      |

Example 2 - single employee

Note here the "St" (state tax exemptions) field simply has a 1 and the SSEx and St Exm are blank.

| Num                | First Name & M.I. | Last Name         | NOTES | P/R       | Division |         |        |     |     |     |
|--------------------|-------------------|-------------------|-------|-----------|----------|---------|--------|-----|-----|-----|
| 100                | KELLY R.          | MILLER            |       |           | 1-1      |         |        |     |     |     |
| Address            |                   | City, State & Zip |       | M/S       | Pay Type |         |        |     |     |     |
| 21020 UAN DYKE RD. |                   | SOMEWHERE LA      |       | 3         | 1        |         |        |     |     |     |
| Phone Number       | Soc Sec Num       | Start Dt          | T     | Fed Added | St Added | SSEx    | St Exm |     |     |     |
| 206-555-2365       |                   | 01/10/91          | N     | 1 0.00    | 1 0.00   | 0       | 0      |     |     |     |
| MC EF              | MC ER             | G/L Exp Acct      | Reg   | Paupate   | Out      | Paupate | Misc   | Ded | Amt | SDI |

### 1.13.4 Missouri/Mississippi

For these two states, there is an additional M/S "Married/Single" type which is "B."

In these two states, a distinction is made between:

**M** - Married spouse does not work

**B** - Married, both spouses work

Pressing F1 while editing an employee in PR option A when in the M/S field will show this additional option if your employee is tied to a division that has a state code of MS or MO and, if linked to MS or MO, you will have the ability to enter a "B" as an additional type.

Employers in MO and MS should review the M/S type of all employees and change any "M's" to "B's" where pertinent.

Note: this is not specifically a 2003 issue. In MO, however, the ability to enter a "B" was not there in PR option A even though there was internal programming logic handling a "B" situation in PR option B. The 2003 update contains this change.

## 1.14 2002 payroll changes

### 1.14.1 Federal

The OASDI taxable wage limit increases from \$80,400 to \$84,900. The tax rate remains 6.2% (with a matching employer contribution).

Medicare taxable wage limit remains unlimited and the tax rate remains 1.45% (with a matching employer contribution.)

The federal income tax exemption has increased from \$2900 to \$3000.

The federal income tax tables have also changed as of January 1, 2002.

The FUTA rate/limit remains unchanged.

For payments treated as supplemental wages, the flat rate decreases to 27.0% as of January 1, 2002. The prior flat rate of 28.0% decreased to 27.% on August 6, 2001.

There are many increased limits for employee contributions to qualified pension plans for the year 2002.

What Advanced Accounting users need to do to implement these changes:

(1) For every division, increase the social security medicare limit; also update your SUTA, workers compensation and state disability rates as of January 1.

(2) With the 2001 update, a new BKPRFTAX.B is provided which contains federal/state tax table updates and changes, however, if your "main" company is not installed in the same directory as your program files or if you use the multiple company feature of Advanced Accounting, your additional companies will not be updated. The easiest way to update those companies would be to copy the BKPRFTAX.B file to each of your companies. The 2001 installation program will actually do this for you. You will be asked if you wish to update the tax table file and if you indicate that you do, then all of your tax files will automatically be updated. If for some reason you do not (example: if you have entered in your own amounts and do not want those to be overwritten) then you would need to make the various rate changes on your own including changing the UT0 code in maintain tax tables, the USS and USM rate codes and the state codes pertaining to the states where you have employees. You would need to do this in EVERY company.

(3) Make any health insurance, retirement plan, cafeteria plan deductions, etc. that might change as of January 1.

### 1.14.2 State

There are a changes in a number of states as of January 1, 2002. Some of these involve internal hard coded program logic and others relate to "table" changes (an updated table is included with the update).

DC - new tables (program changes not needed, table updated)

Maine - table changes, standard exemption increase (changes made)

Maryland - exemption increase, table changes (changes made)

Michigan - exemption change, flat rate decrease (changes made)

Missouri - standard deduction exemptions only changed

New Mexico - exemption increase, table changes (changes made)

North Carolina - exemption increase for married/qualifying widower, table changes (changes made)

North Dakota - no longer a flat 14%, works now like most other states, new table additions (changes made)

Oregon - various changes in internal logic (changes made)

Rhode Island - exemption increase, table changes (changes made)

Utah - exemption increase (UT0 in table), table changes (program changes not needed) (Utah users must update code UT0 unless they install the update)

Vermont - exemption increase, table changes (changes made)

## 1.15 Windows XP/2000

Advanced Accounting 5.1 runs under all operating systems released to date by Microsoft including XP and 2000. They are different configuration issues (that are in general not specific to Advanced Accounting) in each different operating system however. See the technical issues section and the latest [technical support memos](#) for pertinent information.

NOTE: business users should always choose XP Professional and NOT use XP Home for reasons unrelated to Advanced Accounting. See our technical support memo area (linked to above) for further information.

## 1.16 Where to get compatible forms

Advanced Accounting compatible forms can be obtained from:

**DYNAMIC SYSTEMS**

2550 BROWNSVILLE ROAD  
South Park PA 15129  
**800-782-2946**

412-831-1729  
412-831-4754 (fax)

Dynamics offers standard IRS forms as well as compatible checks, statements, purchase order and invoice forms. We guarantee that forms purchased thru Dynamic Systems will work with Advanced Accounting and in the event of some sort of alignment problem, we will at no charge provide replacement printing related programs that will work with your printer (assuming it meets Advanced Accounting 5.1 or 6 requirements) and these forms.

## 1.17 Copyrights/trademarks

Advanced Accounting is published by Addsum Business Software, Inc. and is owned by Addsum Business Software, Inc. Copyright 1997-2003 and by MGM Holdings, Copyright 1985-2003 MGM Holdings, All rights reserved. No end user programs provided by other than Addsum Business Software, Inc. (or previously provided to end users only by Business Tools, Inc.) under the Advanced Accounting name are legal/valid which are based on Advanced Accounting 5.1 or Advanced Accounting 6 and which incorporate any changes made by Addsum Business Software, Inc. since 1997 without express written permission.

Btrieve and Pervasive are trademarks of Pervasive Software, Inc.

Addsum is a trademark and registered service mark of Addsum Business Software, Inc.

## 2 Update install instructions

### 2.1 Initial considerations - PLEASE READ

If Norton Anti-Virus or some other virus scanning software is running on the PC that you are installing the updates from, please disable it!

It is of course always wise to make a complete back-up of your system especially to a location which can be very easily/quickly restored (for example to another hard drive on your network to another directory on the drive where the system is installed or to a ZIP, Jazz drive or to a CD).

If you have no prior customizations of any kind, then after making a back-up copy of your system, you should be ready to proceed to install the updates. If you have made a back-up copy of your system to your hard drive and intend to install the updates to both the back-up copy (not recommended) as well as the "live" copy, you will need to make sure that your back-up copy's "default dictionary path" under "Set Configuration" is set to blank and that the file locations under "Maintain Location File" are changed

to not point to the live installation.

While Advanced Accounting does run under XP, it is NOT recommended that you install from an XP PC. If you must install from XP, you will need to contact us for special instructions.

While the actual time to physically install most of the updates will typically only take a few minutes each, most of the updates involve a restructuring of some of your existing files. How long this last portion takes is completely dependent upon how large your data files are. If you have customer history files that are large, this could take several hours for any given installation. For most users, the time for the update to complete will be relatively small, however, please take this into account when installing the updates. The best time to install is normally towards the end of a business day or on a weekend. Once a given data update process begins, it should not be interrupted.

DOS mode users: if you use BSERVER/BREQUEST (with Advanced Accounting 5.1, would require a Novell server), please do not install these updates and contact 801-277-9240 for further consultation. A different version of the database "merge" utility is required. Most users run BTRIEVE.EXE and so this isn't an issue.

If your system has previously been customized in any way, you will need to consult/coordinate with the person who customized your system to determine how to best implement this update. What needs to be done will depend on the nature of the prior customizations and here are some comments that may be of assistance:

(1) If no prior changes have been made to data structures, then it may be that you will be able to proceed to install all of the updates and immediately thereafter copy back in some of the prior updates. However it may be necessary for any prior customization to first at a minimum be re-compiled or tweaked in some way because of changes related to, for example, the way that average costs or the fact that purchase orders now have locations by line items. So after the custom programs were looked at (regardless of whether were customizations to existing programs or completely new ones), it could be that after installing those updates you would then immediately install the revised/updated customized based on an update received from your TAS programmer.

(2) If you made any prior changes to the front end menu files (BKMENU.ARY or BKMENUW.ARY), those changes will have to be re-integrated with the latest files (that is a simple thing to do).

(3) If data structure changes were made it is CRITICAL that these be carefully reviewed to determine whether any of the prior changes were made to file layouts that any of the updates also changed. If so, you would need to install these updates in a different manner because your programmer would need to provide replacement merge (\*.XFR) files. Further the installations would need to be run slightly less automatic as follows:

- you would install each update to an empty/temporary directory that does not contain your live system - in this way the "merging" and other programs will not initially run but you will have all of the updates
- into each of these directories you would receive the changes from your programmer including replacement XFR files
- you or your programmer would then copy the files in the temporary directory to your live system one at a time in the steps below
- after copying in the files with the composite XFR's which included all of the changes in the standard XFR's plus your changes, you would then, in the DOS mode only of Advanced Accounting, go to U-Utilities then A-Run TAS program and run the following programs in order (it is VERY important that you do this and not just run a generic merge:
  1. BK9799 (if the 1997-99 updates have not been previously installed) after copying in the 97-99 temporary directory files and XFR's
  2. BK2000 (the 2000 update install program) after copying in the 2000 temporary directory files and XFR's
  3. BK2001 (the 2001 update install program) after copying in the 2001 temporary directory files

and XFR's

Again you would only need to go thru this process if there have been customizations to your data file structures that involve the same file layouts as in the standard updates.

Developer notes: The easiest way to synchronize XFR files depends on how many fields you have added to the file layout where there is a "conflict." It is generally probably however easiest for you to simply add the new fields/key changes to your customer's development directory. So for each year, copy in the XFR's for the update, make the changes to your development directory and in TAS 5.1 run TASMERGE and "Copy" just the layouts where you have customizations and copy those into an install directory for that year and then do the same for each of the next two years.

If you'd rather just do this in one big batch and not run the provided "automatic" utilities, you could instead create one consolidated XFR file but you'd have to first synchronize your development dictionary to exactly match the updates. The best/easiest approach again depends on how extensive the customizations are. If the changes aren't that extensive, you could simply start with the latest set of F\*.B's and then re-add your fields and then create a cumulative set of XFR's. Once you have your cumulative set of XFR's you could run the entire process in one step by placing all update files in a temporary directory and with your updated programs and XFR's in place install them by running each of the programs that the BK9799, BK2000 and BK2001 run as follows (i.e. you would do this INSTEAD of running BK9799, BK2000, etc.) (also see below re: the BKUPD51C program):

BKLNENUM (deals with line numbering in BKARINVL/BKARHIVL)  
BKPOFIX (set-ups PO locations by line item)  
BKCVAVGC (populates new average cost by location field)  
UPDPTAX (installs the latest tax file - this is the only optional program)

The first two programs are called by the BK2000 program; the second by the BK2001 program. The BKLNENUM program calls a special version of TAS merge (newmrg00) and that is where the restructure takes place if you were to do a combined installation. As noted, you cannot simply run a TASMERGE/NEWMERGE with XFR's in place.

The normal/automatic install programs will normally delete the above programs upon successfully running each program but if you install the standard updates to a directory that does not contain TPC50.EXE, then they will not initially be done.

To make the process even easier, see the program BKUPD51C. This is a new program that is also used by 4.0 to 5.1 and 5.0 to 5.1 users. We have added a "customization" option to this program. You simply make a cumulative set of XFR's, rename them to \*.XFC and run the BKUPD51C program as the customer site with the \*.XFC files and when prompted, select the "Customization" option.

See [data structure changes](#) for further information.

Customizations:

## 2.2 Data structure changes

This section is intended primarily for developers.

The data structure changes made in 1997-99 have previously been documented. Text files that describe the database structure as well as other changes can be found on the web as follows:

<http://www.addsuminc.com/aaupdate.txt> (1997)

<http://www.addsuminc.com/aaup98.txt> (1998)

<http://www.addsuminc.com/aaup99.txt> (1999)

For 2000 the following field descriptor (aka "layout" or "schema") changes have been made:

**BKARCHKH** (new layout, AR check history)

**BKARINV** (two new key fields BKAR.INV.CUSSO and BKAR.INV.CUSDTE)

**BKARINVL** (two new fields, BKAR.INVL.LINE and BKAR.INVL.CSLNE and new key BKAR.INVL.INVCT which is a combination of BKAR.INVL.INVNM and BKAR.INVL.LINE; new key BKAR.INVL.PCESD which is a combination of BKAR.INVL.PCODE and BKAR.INVL.ESD)

Comments: BKARC saves to the BKARCHKH file, new credit analysis program (which has the same name as the data file, BKARCHKH) reports on this new file.

The BKARINV keys solve data "view" problems so that users can, for example, see what a customer has purchased in date order.

One of the new line counters ensures that order of a sales order/invoice is always preserved (even if the file has to later be reindexed or restructured)

For 2001, the following changes have been made:

**BKICLOC** (new fields BKIC.LOC.AVGC and BKIC.LOC.LSTC)

**BKSYSSEC** (new user permissions layout)

**BKICVEND** (new multiple supplier database)

Comments: a very important shift has occurred away from BKICMSTR and to BKICLOC. The units and value fields in BKICMSTR are now no longer updated or maintained and are only used for temporary calculations. The BKICLOC file now is the only file that tracks units (on hand, on sales order, on purchase order, on back order) and value (average cost, last cost). There is no longer a permanently kept "total value" field inasmuch as it can always be easily calculated (units on hand plus units on sales order at a given location multiplied by its average cost equals that location's value). Not only does this decrease the amount of record locking and eliminate synchronization problem, it also resolves a problem whereby if a user has different GL asset codes for multiple locations, average costing of inventory as to that location could not be supported as in prior versions specific cost was being received via purchase orders or adjustments, but was being sold via the no longer use BKIC.PROD.AVGC field (BKIC.PROD.LSTC is still used to represent the very last "last cost"). More fields will be added to BKICLOC in the future and to avoid naming conflicts, we'd



suggest checking with this before adding fields to this file.

The new user permissions layout file is managed by the user via SY-C. The actual program that manages it is the same name as the data file.

## 2.3 1997-99

To install the 97-99 updates, from the CD simply select the 97-99 option; if running from the web or E-mail, run ADV9799.EXE (requires a password - if you do not have it call us at 888-923-3786 or send an E-mail to [support@addsuminc.com](mailto:support@addsuminc.com)).

This installation will automatically run an install program that will launch the Advanced Accounting engine. When you see your license, simply press the ENTER key and allow the process to complete.

Generally you would only install the ADV9799.EXE file if you have never previously installed any updates since purchasing Advanced Accounting. The updates must be installed in order (except for payroll 2001).

## 2.4 2000

To install the 2000 updates, from the CD simply select the 2000 option; if running from the web or E-mail, run ADV2000.EXE (requires a password - if you do not have it call us 888-923-3786 or send an E-mail to [support@addsuminc.com](mailto:support@addsuminc.com)).

This installation will automatically run an install program that will launch the Advanced Accounting engine. When you see your license, simply press the ENTER key and allow the process to complete.

This update must be installed before installing the 2001 update.

## 2.5 2001

To install the 2001 updates, from the CD simply select the 2001 option; if running from the web or E-mail, run ADV2001.EXE (requires a password - if you do not have it call us 888-923-3786 or send an E-mail to [support@addsuminc.com](mailto:support@addsuminc.com)).

This installation will automatically run an install program that will launch the Advanced Accounting engine. When you see your license, simply press the ENTER key and allow the process to complete.

The 2001 updates include the 2001 payroll updates. Once you installed this update, you are done. (Unless you have the Addsum Utilities or Quotes/Contacts in which case those each also require an update.)

## 2.6 2001 Payroll only

This update was provided for users who wanted to install the prior updates at different time (because of the desire, for example, to immediately print W-2's or receive update payroll withholding logic for initial 2002 payrolls or because the user had customizations that would take some additional time to coordinate before the other updates are installed.)

To install the 2001 payroll only updates, you would run the ADVP2001.EXE from the CD (as we have as of April, 2002 removed it as an option from the CD directly inasmuch as the 2001 updates include those updates); if running from the web or E-mail, run ADVP2001.EXE (requires a password - if you do not have it call us 888-923-3786 or send an E-mail to [support@addsuminc.com](mailto:support@addsuminc.com)).

This installation will automatically run an install program that will launch the Advanced Accounting engine. When you see your license, simply press the ENTER key and allow the process to complete.

Users who have installed the 2001 update do NOT need to install this file.

## 2.7 2002

To install the 2002 updates, from the CD simply select the 2002 option; if running from the web or E-mail, run ADV2002.EXE (does not require a password as the 2002 updates were provided at no charge - however do not under any circumstance install this without having installed all of the prior updates thru 2001).

This installation will automatically run an install program that will launch the Advanced Accounting engine. When you see your license, simply press the ENTER key and allow the process to complete.

## 2.8 2003 Payroll

This update is available for all users. It includes various updates for federal and state withholding changes as of January 1, 2003 (updated July 2003). Users should have installed at least payroll updates thru 2001 before installing this update.

To install the 2003 payroll, run the ADVP2003.EXE from the CD; if running from the web or E-mail, run ADVP2001.EXE (requires a password - if you do not have it call us 888-923-3786 or send an E-mail to [support@addsuminc.com](mailto:support@addsuminc.com)). The cost of this update is \$30.

This installation will automatically run an install program that will launch the Advanced Accounting engine. When you see your license, simply press the ENTER key and allow the process to complete.

See the 2003 payroll changes section for more information or click on one of the links below:

[Federal](#)  
[State](#)  
[Louisiana set-up issues](#)  
[Missouri/Mississippi](#)

## 2.9 2003

To install the 2003 updates, from the CD simply select the 2003 option; if running from the web or E-mail, run ADV2003.EXE (requires a password - if you do not have it call us 888-923-3786 or send an E-mail to [support@addsuminc.com](mailto:support@addsuminc.com)).

## 2.10 2004

To install the 2004 updates, from the CD simply select the 2004 option or the instructions that come with the CD; if running from the web or E-mail, run ADV2004.EXE (requires a password - if you do not have it call us 888-923-3786 or send an E-mail to [support@addsuminc.com](mailto:support@addsuminc.com)).

The 2004 updates include the payroll updates; users can install the payroll only updates. This includes various updates for federal and state withholding changes as of January 1, 2004. Users should have installed at least payroll updates thru 2001 before installing this update. W-2/W-3 forms have also changed for 2004.

See the 2004 payroll changes section for more information or click on one of the links below:

[Federal](#)  
[State](#)

The 2004 update also includes preliminary changes for states that have published changes by mid-December, 2004 that will go into effect January 1, 2005. The 2004 updates does not include within it an updated federal table since that table should not be implemented until after W-2's are printed and the user is ready to process the first 2005 payroll. To receive a copy of our December 2004 bulletin outlining what changes should be made starting 1/1/05, please call us.

This installation will automatically run an install program that will launch the Advanced Accounting engine. When you see your license, simply press the ENTER key and allow the process to complete.

The cost for the 2004 updates is \$75. This includes any/updates that may be released during the year (requires that you later download an updated ADV2004.EXE and reinstall - do not however reinstall any other updates!).

## 2.11 2005 (5.12g)

2005 updates primarily for payroll and miscellaneous items will be made. The newer releases of Advanced Accounting however will receive the greatest ongoing development attention. The 5.1 version will continue to be actively supported.

Preliminary 2005 payroll information has been incorporated into the 2004 updates. Updates that states may not publish until after the end of the year however will practically only be available in the 2005 updates.

## 2.12 Addsum utilities 2001-2

If you have Addsum Utilities these have been updated for all 2000/2001 (and 2002 1st quarter) changes (there is just one update that needs to be installed to cover all.) There is no additional charge for existing users who are obtaining standard updates thru 2001. To install the 2000-2001 Addsum Utilities updates, from the CD simply select the appropriate option; if running from the web or E-mail, run ADDU2001.EXE (requires a password - if you do not have it call us 888-923-3786 or send an E-mail to [support@addsuminc.com](mailto:support@addsuminc.com)).

Users who have previously installed 2000/2001 can install the 2001-2 option from the CD.

Developers note: Updated source for prior purchasers is also available at no additional charge for developers who purchase source updates thru 2001.

## 2.13 Quotes/contacts 2001-2

If you have Quotes/contacts, these have been updated for all 2000/2001 changes (there is just one update that needs to be installed to cover both.) There is no additional charge for existing users who are obtaining standard updates thru 2001. To install the 2000-2001 Quotes/Contacts updates, from the CD simply select the appropriate option; if running from the web or E-mail, run ADDQ2001.EXE (requires a password - if you do not have it call us 888-923-3786 or send an E-mail to [support@addsuminc.com](mailto:support@addsuminc.com)).

Developers note: Updated source for prior purchasers is also available at no additional charge for developers who purchase source updates thru 2001.

## 2.14 UPS interface

A significant update to this add-on was made in December 2001 (unrelated to Advanced Accounting

5.1 2000-2001 updates) but there are no specific changes required as a result of the 2000 or 2001 updates. This update is available at no charge to existing Advanced Accounting 5.1-UPS interface users. For further information see <http://www.addsuminc.com/ups.htm>.

## 2.15 What to do after installation

Since new front end menu files are provided with the 2001 update, all modules are turned on. If you do not use point-of-sale or job cost or bill of materials, you may need to turn those modules off.

If you have not previously installed the 97-99 updates, you will need to set-up the supplemental system file and go into the terms program (SY-B). Payroll users will need to update their FICA limits as well as SUTA, work comp and SDI rates. Once the 2001 updates are installed, go to SY-C and you will see the new user permission option. In connection with 2000-2001 updates, you will also note the new option under inventory (IC-M) and the credit analysis report (AR-O).

## 2.16 Install files that can be removed

There are various temporary files used by the installation. Most of these will be automatically deleted and for the most part you do not need to worry about any of these.

If you download any of the updates via the web, once you have installed these, you can of course delete the corresponding install EXE, i.e. once installed it is no longer needed. If you would like to keep them, we would recommend NOT keeping them in your ADV51 subdirectory.

Files that can be safely deleted once everything has been installed include:

ADV9799.EXE  
ADV2000.EXE  
ADV2001.EXE  
ADVP2001.EXE  
ADDS2001.EXE  
ADDQ2001.EXE

(these are also the file names contained on the CD)

Files that should be automatically removed but if for some reason they do not, can be safely removed manually include:

ADDMERGE.EXE  
COPYFILE.EXE

BK9799.RUN  
BK2000.RUN  
BKLNENUM.RUN  
BKPOFIX.RUN  
BK2001.RUN  
UPDPTAX.RUN  
BKCVAVGC.RUN  
NEWMRG00.RUN  
BKPR2001.RUN

Which of the files above are used depends on the update installed.

On the PC where the update is installed, an ADDSUMM.INI file will be created (in the WINDOWS or WINNT directory of the local drive) that can be safely deleted although the install programs will normally delete that automatically.

No registry changes are made by any of the updates.

## **3 Special topics**

### **3.1 2000 AR payment history**

This is a new program enhancement. The AR-C (record payment programs) will, from the date of installation, start to record payments received into a new data file. While there are other data files in the system that also track a customer's history payment, this new file among other things tracks to what extent a customer paid within terms. New program option AR-O reports on this data.

### **3.2 2000 Purchase order locations**

The purchase order system has the same functionality as the sales order system in terms of being able to enter a location for each line item. As in the latest sales order entry program, a user can enter a default location (assuming they are not restricted to a given location via user permissions) and all subsequent line item entries will default to that location providing functionality similar to the past. For any given line item however the location can be changed to a different location if desired and when the purchase order is received, the inventory will flow to the line item location specified.

In order for a user to make smooth transition to line item locations, the installation runs a special program which updates the line item location fields with the location previously entered by the user so that pending PO's can be received without any effort by the end user.

### 3.3 2000 Sales order/invoice line counters

Both an internal and external/option counter has been provided. Internally, the system was previously never internally keeping track of the order of sales order line items (and consequently invoice history). Previously, in the event that sales order or invoice history line item had to be reindexed because of a data corruption problem (or in the event that a standard program update or a customization was added that changed the structure of the line item), the order in which line items would then appear would change. In addition users can now enter a customer reference 'line item' that the user's customer may require appear on an invoice (will only appear however on a blank/non-pre-printed form type invoice).

A special program is run by the installation which determines the line item sequence of the line items in both the pending sales order and invoice history line item files and which automatically updates the new internal counter field.

### 3.4 2001 Maintain IC location

This is a new option (IC-M) starting with 2001. Through this option, master inventory locations can be added.

The adding of inventory master locations "on the fly" are no longer possible in IC-A. Instead use this option to add or delete a master location.

With these options, users have powerful new tools to manage inventory locations and better control the addition of new master locations.

Each option has a front screen providing operation information that will not be repeated here. When adding a location, you can set-up the GL codes in three ways:

- By basing them on some other existing location code (the program will use the first "other" location code that it finds)
- Same as above but with the ability to specify a different department code (these codes need to have already been created in the system via SY-E).
- Based on whatever GL codes that you enter into this program - in this event, the program will attempt to find your DEFAULT record under IC-A and use those location codes.

If you just want to add a location without necessarily adding to any existing locations, simply type in the name next to "New location to add:" and you will be asked if this is a new master location. After you answer "Y"es, the new location is in the master inventory file and you can simply press ESCape at that point if you do not want to add the master location to all or a portion of your existing inventory database.

In attempting to create new inventory locations, the add utility checks among other things for valid GL codes and if those are not found, the new location records will not be created. If there are any errors, at the end of the utility the program will notify you and you will then be able to see a log of the errors that were found so that corrective action can be taken.

In deleting locations, note that you cannot delete the blank location with the utility. Further if you

attempt to delete a location that has units, it will add those units to an existing blank location record (or create a blank location record if necessary) and it will change the location to be blank in connection with any pending sales orders or purchase orders. In connection with inventory locations that contain invalid GL codes, it will also display a warning message.

Developer notes:

Three are actually three new programs:

BKICM - stub/menu program that calls the two options

BKICLOCA - add location program

BKICLOCD - delete location program

### 3.5 2001 W-2 changes

The "Display W-2 history" option has been updated to change the references from box 13 to box 12 if the year is 2001 or after (this same option is available via PR-A).

**IRS form W-2 changes for 2001 are:**

- The over all width of the official format will increase from 7" to 8 1/2."
- Most of the boxes have increased in width.
- The last name is separated from the first name and middle initial in box "e."
- All of the money boxes have pre-printed "\$" on copy A.
- Boxes 12 through 15 were all changed in position, heading or content.
- Box 12 was renumbered to be, 12a, 12b, 12c, 12d, and is now being used to reporting the contributions made to a qualified plan.
- Box 13 was previously box 15 and is used for reporting, "Statutory employee", "Retirement plan" and "Third -party sick pay."
- The box 14 position changed.
- The state boxes were all renumbered due to the above changes and now start with box 15. The state box headed "Locality name" new appears at the end of the row.
- Continuous forms are now 9 1/2" wide overall.

**IRS form W-3 form changes for 2001 are:**

- The width of the form increased from 7" to 8 1/2."
- Box 13 was used to report 401k, Simple/401K and Simple 408(P) and is changed to now record "for third-party sick pay use only."
- Box 14 was a blank field and is now changed to report, "Income tax withheld by payer of third-party sick pay."
- Box 15 is now used for reporting "State" and "Employer's state ID number."
- Boxes 16 through 19 were added for state reporting.
- Box 16 was added to reporting "State wages, tips, etc."
- Box 17 reports the "State income tax."
- Box 18 is now for reporting "Local wages, tips, etc."
- Box 19 reports the "Local income tax."

Advanced Accounting's programs for W-2 related changes have been updated to comply with the new requirements. Note that these forms must purchased from the forms supplier of your choice (or from



### Advanced Accounting form suppliers).

In addition, users have the ability to have any desired deduction amount appear in Box 14 (Other) along with a user defined abbreviation description that will also print in Box 14. The lease value of a vehicle must be reported in Box 14 (or in a separate statement to the employee); otherwise use of Box 14 is completely optional and can be used for items such as state disability insurance taxes withheld, union dues, uniform payments, health insurance premiums deducted or withheld, nontaxable income, educational assistance payments, nonelective employer contributions made on behalf of an employee, voluntary after-tax contributions that are deducted from an employee's pay, required employee contributions and employer matching contributions. See IRS instructions for further information.

The W-2 programs now the ability to print only a range of employee codes. This would be used when, for example, one W-2 was not correct or didn't print properly. After not proceeding to clear employees, a user can then re-enter this program and print just the one W-2.

A new feature has also been added relative to SDI. If you answer "Y" to the SDI question, if an employee has any year-to-date SDI, it will automatically print in box 14 with the description, SDI.

NOTE: Because of the technical nature of some of the internal program code, it is possible that you may not be able to line up the printing correctly in the Windows mode. We strongly recommend printing W-2's in the DOS mode only of Advanced Accounting 5.1.

#### Developer notes:

BKPRG is the continuous forms program  
BKPRGL is the laser form program  
BKPRHW2 is the display W-2 history program

## 3.6 2001 User permissions

New "add/chg/del User Permission" option.

Background: Historically Advanced Accounting's security focused on whether the user had access to a program option or not. This was sufficient for many users. However as Advanced Accounting's user base has matured and users have increased in size and whose needs for remote access have increased, more sophisticated security options are needed to control what users can or cannot within certain program functions that they have been provided access to.

Set-up/program operation: Once program updates thru 2001 have been installed, proceed to **Y-**

**System Maintenance** then **C-Enter/Chg Password Info**. You will see a new option **add/chg/del User Permissions**. You must have previously set-up user logons and security levels via the other two options. (Note: it is highly recommended that you assign every user a separate logon code. Users should further be encouraged to change their passwords regularly via the new [Change user password](#) option.)

To set security settings for a given user logon, press F2 (or click the look-up button) or enter the logon code. Or, leave the logon code blank and enter a security level that to which the settings will apply.

A person's individual permissions will always override the permissions set for that person's security level. If you wish to restrict a user from printing reports showing other salesperson codes, you must enter that user's employee/salesperson number in the appropriate field; otherwise, the employee number field is of no consequence. If a user is not set up in the user permissions file, he/she will have none of these restrictions.

The intention is to apply these restrictions in some of the most commonly used programs. In certain set-up programs, for example, no restrictions have been implemented because it is assumed that if a user has access to those programs, they need to be able do to enter whatever they want.

Most of the available options/restrictions are self-explanatory; more help may be added here later to better explain what each option does or does not do.

Here are issues specifically involving the AR credit limit option:

Select ALT-R to work with Accounts Receivable options. If you do not want to allow a user to override a credit limit nor be able to enter a credit limit, answer "N" to the "enter credit limits" question. A user who can enter a credit limit will also be override it when entering a sales order via SO-A (but will still receive a warning message). Users who cannot enter a credit limit will not be able to have access to the credit limit field even if they otherwise have access to accounts receivable entry option AR-A.

Credit limit specific issues: In order for credit limit messaging/rights to work, you must have S/O Credit Limit Msg Off set to "Y" under **Y-System Maintenance** then **B-Enter/Chg Invoicing Defaults**. When first entering a new sales order, a user who does not have rights to enter a credit limit will not be able to use a customer who has exceeded a credit limit. A user who does have access will be given a warning message, and if they elect to continue, no further messages will be provided. NOTE: no one will be able to use a customer code to create a new sales order who has been set to have a credit limit of less than 0, e.g. -1. The user in this case will receive a message indicating that the account requires credit approval. In addition, if a customer when first being selected on a new sales order has not yet exceed their credit limit but does so in the course of line item entry, a user who does not have rights to enter credit limits will not be able to proceed with entering the line item. They will not however lose what they have already entered if they entered at least one prior line item. A user who can enter credit limits will receive a warning and then may elect to not proceed (and will similarly not lose prior information entered) or may elect to simply proceed. It should be noted that in checking to see whether a credit limit has been exceeded, the program ONLY looks at the customer's outstanding, posted invoices at that moment in time. It does not take into consideration any outstanding credits nor does it take into consideration any other pending sales orders.

Note that when bringing up an existing sales order initially, there is no credit limit checking. However, if prices are changed or new items added that increase that change the total, the same credit limit checking will apply. Note also that if you change the customer code on an existing sales order, credit limit checking will then of course be based on the new customer code. (This might provide the end user with a loophole in changing an existing sales order's customer code to someone who has a higher credit limit and then adding additional items, saving it and then bringing it back-up and changing to the prior customer code however the credit limit checking will "catch" that situation.)

Developer notes:

This option calls a new program, BKSYSSEC. A new data file by the same name is where the various flags are saved. It is likely that more flags will be added to this file in the future.

This option is accessed via SY-C, new program BKSYSSEC, data file BKSYSSEC.

This is a quick summary of programs impacted by this feature (there are some 11th hour program changes where we may have added this to some additional programs that may not be included here) and this is meant as a general guide:

Specify whether user can override control date SY-A  
 Specify number of days prior to or after system date which user may post a transaction AP-B, AP-F, AR-B, AR-C, GL-B, IC-G, PO-D, PR-D, SO-F  
 Restrict user to a location PO-A, PO-D, SO-A, SO-I  
 Restrict user to a GL department AP-B, AR-B, GL-B, IC-A, PO-A, PR-A, SO-A, SO-I  
 GL: Specify whether user can enter budget amounts GL-A  
 GL: Specify whether user can enter GL dept's AP-B, AR-B, GL-B, IC-A, PO-A, PR-A, SO-A, SO-I  
 AR: Specify whether user can enter terms AR-A  
 AR: Specify whether user can enter credit limits AR-A  
 AR: Specify whether user can add customers and change customer information AR-A, AR-B, AR-C, PO-A, SO-A, SO-I  
 AR: Specify whether user can delete customers AR-A  
 AR: Specify whether user can change salesperson numbers AR-A, SO-A, SO-I  
 AR: Specify whether user can enter/change/view credit cards AR-A, SO-A, SO-I  
 IC: Specify whether user can see cost information IC-A, ALT-I, PO-D, SO-A, SO-K  
 IC: Specify whether user can add products and change inventory information IC-A, PO-A, SO-A, SO-I, SO-J  
 IC: Specify whether user can delete products IC-A  
 SO: Specify whether user can delete sales orders SO-A, SO-I  
 SO: Specify whether user can delete line items SO-A, SO-I  
 SO: Specify whether user can enter negative units SO-A  
 SO: Specify whether user can go into negative units on hand SO-A  
 SO: Specify whether user can override credit limit SO-A  
 SO: Specify whether user can print reports showing other salesperson codes SO-M  
 PO: Specify whether user can delete purchase orders PO-A  
 PO: Specify whether user can invoice received purchase orders PO-D

### 3.7 2001 Average cost by location

The way that average cost in the system has changed in a fundamental way to solve various internal costing problems that can otherwise occur. All users that have inventoriable items, should update to the latest version for this change alone.

Advanced Accounting still uses the moving average cost method to determine average costing. However the cost is not kept at the location, rather at the inventory master level. This allows users to better track costing by location and keeps costing changes at one location from impacting another. It further allows the moving average cost to be kept in a more consistent way and which in the GL is supported by an inventory listing when the GL asset account is different between two or more locations for the same product code. Potential inventory master locking issues on multi-user systems is also greatly reduced as a side benefit of this change.

"Blended average cost" (which is equivalent to the number that the system previously updated in the inventory master file) is now always calculated on the fly as is total inventory value. (Users who may

be accessing the old BKIC.PROD.AVGC and BKIC.PROD.TOTVL fields via Crystal or User defined reports will need to understand this and make appropriate changes - the fields will still exist, i.e. they are not being removed from the file but the system no longer uses them as permanent storage fields.)

Overall cost information with a location breakdown can be viewed (assuming that a user has not been restricted from seeing it) in IC-A by either using the new CTRL-K Cost Info option or via the PgDn (last two columns in the location and/or press ENTER on a location). The CTRL-K option will provide the computed blended average cost and value as well as the last cost followed by the each location's average cost, last cost and units. The ALT-I option will similarly compute the blended average cost and value with a display similar in the past.

A special utility is run in the installation to move average and last cost in the inventory master file to the new fields in the inventory location file.

#### Developer notes:

Average Cost by Location: average cost and last cost are now tracked on a location basis (new fields BKIC.LOC.AVGC and BKIC.LOC.LSTC)  
UOH, UOSO, UOO, and UBO fields are no longer updated in BKICMSTR– units are automatically synchronized with the locations' units

#### Program Modifications

LISTG50.lib: removed average cost and last cost from the inventory look-ups; every time the inventory look-up is displayed, the units are synchronized with the locations' units (new function synch\_icmstr in ADDSUM.lib)  
IC-A: removed average cost and last cost from main screen; added average cost and last cost to locations list; ^K Cost Info option to view a quick list of each location's average cost and last cost  
IC-D: added location total value to report  
IC-G: revised and rewritten for average cost by location  
ALT-I: display each location's average cost and last cost  
PO-D: several changes to update average cost and last cost by location  
SO-A: use location's average cost when checking if item is being sold below cost  
SO-F: use location's average cost when computing COGS  
SO-G: use location's average cost when computing COGS  
BOM module - changes almost all programs for reasons similar to the above  
POS-E: changes similar to SO-G

Clear Data: updated for fields BKIC.LOC.AVGC and BKIC.LOC.LSTC

Programs Re-compiled Only (note: some of these programs were modified only to include an open into BKICLOC so that the units in the inventory look-up can be synchronized):

Inventory Movements Report, IC-B, IC-C, IC-E, IC-F, IC-H, IC-I, IC-J, IC-K, PO-A, PO-C, PO-E, SO-B, SO-D, SO-E, SO-I, SO-K, BOM-A, BOM-B, BOM-C, BOM-D, BOM-E, BOM-G, POS-A, POS-B, POS-G, POS-J

(there may have been a few others since this documentation was originally prepared)

## 3.8 2001 Multiple suppliers

In past versions Advanced Accounting, users could enter a manufacturer code and could enter a "last cost" and "last vendor" when adding a new inventory item. When entering a purchase order, the system would then simply use whatever the last cost was for that item.

This creates management problems for users in that the last cost may have been a special or unusual cost and may not necessary be the supplier's normal or "catalog" cost. Further it did not provide an

ability to keep track of different supplier part or SKU numbers nor a different cost based on the supplier/vendor that from which an inventory item may be purchased.

An entirely new option exists in the Ctl-PgDn ("Information options") which can also be directly accessed via ALT-M. This allows an end user to manage the supplier from which a part is purchased. The supplier/vendor must exist as a vendor under AP-A to be added here. The supplier/vendor's part code can be entered along with the last cost, catalog cost, the date last updated and optional comment.

The same supplier/vendor code can only be entered once for a given inventory item. When entering purchase orders (PO-A), the default cost for the item will be the catalog cost if one has been entered for the supplier/vendor (otherwise it will be the product's overall last cost as in prior versions). When receiving a purchase order, the last cost and date last updated will automatically be updated (both of which are provided simply for reference).

When printing a purchase order (PO-B) and toggling the printing of manufacturer codes on, if you have entered a supplier's part code, that code will be print instead of the manufacturer code (otherwise, the manufacturer code will print as before).

Developer notes: Program changes involved BKICA, BKPOA, BKPOB and BKPOD. The new data file layout is BKICVEND.

### 3.9 2001 Change user password

This is a new menu/program option included with the 2001 update. The "Other" option is the last menu option (except for Logon again) and was formerly labeled EXEC in the menu and REPORTS in security (in the second screen of the security level maintenance program).

This option allows a user to change their own password. Only the password of the logged on user can be changed and the end user of course cannot in any way provide themselves with any increases right of privileges through the use of this option. This encourages end users to change their password frequently and whenever they feel that their password may have been for whatever reason compromised. This option further eases the burden of having to change any given individual's password and eliminates the need to have to even communicate the password change. The system administrator of course can still see what any end user's password at any time should the need arise for whatever reason.

It is strongly recommended that you enable this option in every security level so that every user will have access to it.

### 3.10 2001 Main menu program

Several changes to the main menu program have been made:

- (1) Users can press ESCape to get out of the logon screen;
- (2) Logon codes/passwords are forced to be upper case;
- (3) The logon code input is masked just like the password field as an extra security measure (and because it is easy to inadvertently start to enter your password while still in the logon code field, thereby revealing your password to anyone who may be watching);
- (4) Change to where the system looks to avoid duplication of entries (specifically in connection with the quotes/contacts module);
- (5) A certain combination of keystrokes could lead to the bypass of the logon screen and provide full access - that has been eliminated.
- (6) Updated copyright notice

Developer notes:

This impacts the BKMENU program the source code to which is not distributed.

## 4 How to

### 4.1 E-mail invoices, quotes

While in future versions this will be further enhanced and streamlined, you can generally E-mail any document that is otherwise destined for a printer in Advanced Accounting 5.1.

For quotes (as but one example), select the "non-compressed" option when printing a quote and then when it asks you where to print, select "D":isk. Output the file to a name in this format:

QXXXX.TXT

where the first letter represents the quote type and XXXX is the quote number

Suppose the quote number is 762. When asked for the file name the name under the foregoing procedure would be:

Q762.TXT

Then you simply go into your E-mail and 'attach' the Q762.TXT file (in some software such as Pegasus you may need to specifically indicate that it is a text or "ASCII" file in order for it to be sent correctly - you would navigate to the path where Advanced Accounting is installed, e.g. F:\ADV51\Q762.TXT).

Be sure not to put any spaces in the file name.

For purchase orders, it is recommended you use a common beginning letter such as a "P" and for sales orders use an "S" and that keeps everything separate and it also avoids the possibility of overwriting a key system file of any kind and this is the simplest approach.

For sales invoices, it is normally best to print a posted invoice to disk using the reprint invoice program (sales order option N).

Another approach if you have a lot of users who will be doing this: set-up a special directory on each person's local C: drive or in a subdirectory under ADV51 and then tell them to reference that path when outputting a file - that way it keeps the clutter out of your ADV51 directory and it will also avoid the possibility of anything to disk overwriting anything.

So under this approach, you might want to create a directory on each PC called: C:\EMAIL. Then when you are asked where you want to print in my first example, you would answer "D"isk and then type:

```
C:\EMAIL\Q762.TXT
```

And then when you go into your E-mail you would simply attach and send the C:\EMAIL\Q762.TXT file.

## 5 Technical issues/reference

### 5.1 Cumulative 97-99 part I

#### ADDSUM ADVANCED ACCOUNTING 5.1 UPDATE SUMMARY (1997-1999)

Last revised: 2/8/00

This is a compilation of program changes made for 1997-1999.

New programs:

BKICTRAN - inventory movements report (I/C-L) (updated 12/98)  
BKARCOLL - Unpaid invoices report (A/R-M)  
BKARVCOL - Unpaid vouchers report (A/R-N)  
BKSYSUPP - supplemental system master file maintenance (option E under A)  
BKAPVCOL - Unpaid vouchers report,bkapvcol (A/P-R)  
BKSOP - enter/change ship and due dates (after posting has occurred)  
BKSTART - use instead of BKMENU to start with user defined default  
company files - see comments in ADV.BAT for use and new  
environment variable TASEXT  
BKPRHW2 - see below, new program 12/98

#### GENERAL LEDGER

##### G/L-A View/Chg Chart of Accounts

Change in key used to display G/L codes

Unless user is changing budget amounts, set chart of accounts to read only mode to avoid conflicts.

Make view only question consistent with other programs; fix read only mode logic.

Show fiscal year start/beg date, clean-up screens, remove F10 in function list when in read only (look at) mode, enable PgDn in read only mode.

Integration with new active/inactive field; show on screen.

##### G/L-B Enter/Chg/Print G/J Entries

System master file is staying locked after saving one transaction causing other users to get a BKSYSMSTR lock error while performing other functions. Problem resolved.

Removed record locking for BKGLCOA, remove opening file BKGLCOA

Integration with new active/inactive field; new default description feature for line items and new F5 to option set/re-set the default description at any time.

Add new feature to be able to attach a lengthy note to general journal entries - various internal changes made to accommodate; new purge function (because we now no longer delete entries out of the GJ transaction files as was previously the case.

##### G/L-C Post G/J Transactions

Previously when making a journal entry involving a cash account, the system was always making a posting to the check register file even if the journal type was "GJ" - entries now made only if "CR" or "CD."



Give user the option re: whether to put a transaction into the check register file even if the GJ entry was not made to CD or CR.

Changes related to new feature added in GL option B to attach notes to general journal entries - no longer delete GJ transaction entry files, misc. other changes in program flow.

#### **G/L-D Print Journals**

When running a journal in Windows mode, the correct G/L description was sometimes not showing up on the report but rather a description relating to another G/L code.

Add print summary only option, thru date validation fix.

Tighten up access to the payroll journal.

#### **G/L-E Print Detailed Trial Balance**

New filter range for transaction code

New option to NOT include income/expense account balance forwards when a beginning date is specified - significant enhancement for many customers.

Re-compile for new GL list.

#### **G/L-F Enter Financial Statements**

Re-compile for new GL list.

#### **G/L-G Print Financial Statements**

Provides ability to limit output to non-zero balances (1 column financials)

Shows balance sheet and income statement dates in a more conventional and professional fashion

In Windows mode, numbers over \$999,999.99 were showing as not being formatted.

Make printing of formal date conditional on printing a one column financial.

Changes in handling of percentage calculations; allow user to change the financial statements period description.

New option regarding whether to include dollar signs.

#### **G/L-H Print G/L Code & Description**

Re-compile for new GL list.

#### **G/L-I Print G/L Chart of Accounts**

Re-compile for new GL list.

#### **G/L-K Reconcile Check Register**

Opens the check transaction file BKGLCHK in a different manner to avoid conflicts with other programs.

#### **G/L-M Enter Recurring G/J Trans**

Integration with new active/inactive feature.

**G/L-N Generate Recurring G/J Trans**

Check the fiscal date of the actual G/J transaction generated otherwise postings could go to the wrong year/month in the chart of accounts file.

**G/L-O Format Custom Statements**

Calc base and total fields were showing up as size 1 so that user could not enter up to 20 unique totals/calculation bases as described in the manual (required change to underlying data file BKGLFSTL); screen change concerning maximum number of location (9 instead of 20).

Re-compile for new GL list.

**G/L-P Print Custom Statements**

Re-compiled in light of BKGLFLSTL change (see BKGLO).

**ACCOUNTS PAYABLE****A/P-A Enter/Change Vendors**

New "view only" option so that even though someone else may be looking at a given vendor code, another user can still look at all of the information concerning that vendor.

Show record count on screen; check for and delete blank vendor codes.

Add ability work with the vendor options menu when adding a new customer code.

Default look-up to vendor name, force vendor name upper case.

Tighten up security access to other programs.

Update relating to coming into this program from A/P-B.

Make view only language consistent.

Fix alignment problem when looking at pending/historical P/O's.

New PgDn options to look-up recurring vouchers, A/P vouchers and check history transactions.

Integration with new active/inactive feature (new field); program header changes now based on view only status; if view only, do not allow the user to enter through fields so that they do not think that they are able to create/change a vendor record.

Possibility of duplicate vendor codes if two users both entering exact same (new) vendor code at same time.

Internal change only in checking for duplicate vendor codes.

**A/P-B Enter/Change Vouchers**

Improved manual check handling - allow for posting based on invoice date rather than check date; screen formats changed for invoice date instead of just date.

New checking in the history for possible duplicate invoice numbers.

Eliminate opening of temporary pick to pay file unless user is picking a voucher to pay to avoid conflicts/lock-ups with other A/P programs. (NOTE: this created a few initial problems in being able to edit previously entered amounts but these were subsequently resolved.)

Vendor address verification and ability to change on the fly.

Option to "process check now" for the voucher just entered; improved handling of pick to pay check file to avoid multi-user conflicts.

When trying to backout a manual check, resolved file opening/closing error message. Move the vendor address confirmation until AFTER it is determined that a new A/P voucher is being entered.

Tighten up security access to A/P-A; ability to change the invoice date when entering the invoice lines.

Check for possible duplicate check number when entering a manual check.

Fix for BKGLCHK check register date being saved as 00/00/00 instead of check date when a manual check is involved.

New feature - program asks if you wish to enter another transaction for the same vendor to speed the entry of multiple vouchers for the same vendor.

Re-compiled for change in ADDSUM.LIB - duplicate check no. checking.

Turn of windows to avoid potential GPF problems/processing checks.

Do not automatically update the default A/P G/L acct for a vendor with no default upon entering a voucher.

Significant redesign/flow of program, new prepayment handling feature when terms are PREPAID - see BKPOD also.

Update for the way the program finds the word PREPAID in the new terms file.

Change the default to "exit" when backing out/editing a voucher.

Integration with new active/inactive feature.

When editing an A/P voucher, ask whether to clear out the prior information or not.

Implementation of the "other vendor is payee" option.

#### **A/P-C Print Inv Due by Date**

Re-compile only for new look-up list.

#### **A/P-D Pick Vouch/Inv to Pay**

Do not compute discounts on credit memos.

#### **A/P-E Print Pro-Forma Chk Reg**

Not ejecting page when printing a pro forma.

#### **A/P-F Print Checks**

Coordinate with new option in BKSYA allowing user to "force" all output

in laser check format regardless of what other options have been selected in multi-printer maintenance (DOS mode) or in the INI file (Windows mode).

Take out reference to "direct" (causes page faults or otherwise stops users from printing).

Improve format of check. Eliminate having to void laser checks. DOT MATRIX check type (7") printing in Windows mode capability provided (previously only laser check style printing was supported when printing in Windows mode).

Show number of records picked to pay.

Discount amounts were not being saved into the A/P transactions file.

Removed check number on top portion of laser check because the standard laser check forms do not contain a column for check number.

Check for possible duplicate check number.

Update for internal handling when there are more items than will fit on a check stub (to a laser printer).

When printing a check with more than 14 lines (most that will fit on one stub) to a laser printer in Windows mode, the "insert a blank piece of paper" message needed to be changed to tell the user to insert it not as the next piece but the one after.

Re-compile for change in ADDSUM.LIB - duplicate check nos.; change in spacing positions for laser checks.

Update for when there are more lines than can fit on a dot matrix check stub in Windows mode.

New record lock "pre-checking" for A/P and cash account to ensure that these records can be locked in a multi-user environment.

### **A/P-G Print Aging**

Provides true "as of date" listing - when as of date selected, program calls entirely new program BKAPTRH - vendor transaction history report which among other things can provide a true as of date listing as long as A/P transactions have not been purged.

Add features similar to BKARF, ability to sort by vendor name, ability to select the aging calculation date.

Update to new sorting feature when running in Windows mode.

New feature when selecting one vendor to skip to first record with an amount remaining or to start as of a specific date.

Add old style A/P as of in the event that user has purged their BKAPINVT (A/P transaction file); improvements to A/P transaction/as of program for F2 look-ups, standard screen changes, when printing subtotals only do not print vendors with zero balances.

Re-compile only for new look-up list (BKAPG).

### **A/P-H Print Vendor Code & Name**

Re-compile only for new look-up list.

Search key selection fix when in Windows mode.

**A/P-I Print Vendor General Info**

Re-compile only for new look-up list.

Search key selection fix when in Windows mode.

**A/P-J Print Vendor Purch Info**

Re-compile only for new look-up list.

**A/P-K Print Vendor Mail Labels**

Program was not correctly printing to labels. Specifically changed to print to AVERY form 5260 when printing "three across" labels.

Re-compile only for new look-up list.

Multiple printer set-up re-enabled.

**A/P-L Print Vendor Rolodex**

Re-compile only for new look-up list.

**A/P-M Enter Recurring Vouchers**

Integration with new active/inactive feature.

Update relating to multiple terms feature.

Fix in the general ledger validation look-up for departments.

**A/P-N Generate Recurring Vouch**

Code field is sometimes not getting saved when generating recurring vouchers. Added safeguards to ensure this does not happen.

Check the fiscal date of the actual voucher generated otherwise postings could go to the wrong year/month in the chart of accounts file.

Fix for G/L transaction code not getting saved correctly.

**A/P-O Void A/P Check**

Allow the user to specify the void check date (today's date) rather than just using the current system date; allow the user to specify the void check description/reason; make sure that the void check date is within the expected posting/fiscal year range; provide informational notice that the corresponding A/P vouchers have been restored and are again pending.

**A/P-P Print A/P Payment History**

Adjustment in check break section to ensure that the checking account number is in a valid range.

Re-compile only for new look-up list.

**A/P-Q Purge A/P Payment History**

Re-compile only for new look-up list.

**ACCOUNTS RECEIVABLE**

**A/R-A Enter/Change Customers**

New "view only" option so that even though someone else may be looking at a given customer code, another user can still look at all of the information concerning that customer.

Show record count on screen; check and delete blank cust codes.

Add ability work with the customer options menu when adding a new customer code.

Default look-up to customer name, force customer name upper case.

List/look-up quotes and quotes lines similar to look-up for current sales orders, etc. (applies to the "quotes" version only).

Help for flip name feature, e.g. entering individual names under customer name as SMITH;JOHN - use a semi-colon to separate.

Update related to when new customers are created in BKSOA.

Update re: asking question about looking at records; if user inputs an amount less than zero in credit limit, invoke a credit block.

Sales by month option 5 would not show COGS when sales were zero; when system maintenance option is "X" force user to enter their own code.

Update for PgDn history look-up in a company other than the main one.

New option R on the customer options (PgDn) screen to be able to list all recurring vouchers for a customer - pressing enter takes the operator to the recurring voucher itself for editing (just like a pending S/O). Integration of quotes add-on module options so that there is just one version of BKARA.

New options to view vouchers, current P/O's, P/O history, jobs pending and job history for a customer (PgDn screen).

Credit card validation/date checks; Windows mode display for credit card expiration date.

Re-located position where new file opens were added to reduce file resource load and avoid Btrieve error 86 especially when users are chaining/coming back from BKSOA after starting in BKARA and then coming back to BKARA and viewing history in second instance of BKARA.

Integration with new active/inactive feature (new field); program header changes now based on view only status; if view only, do not allow the user to enter through fields so that they do not think that they are able to create/change a customer record.

Formatting changes to sales order (add fax field, do not print phone or fax if they are blank).

Possibility of duplicate customer codes if two users both entering exact same (new) customer code at same time.

**A/R-B Enter/Change Vouchers**

Tightened security access to add A/R customer program.

Fix when backing out voucher and a G/L dpt. is involved.

Validation of G/L department.

Integration with new active/inactive feature.

### **A/R-C Record Payments**

Save to customer last payment date only if transaction is in fact a payment

Do not allow system to overwrite descriptions with the word CREDIT in some situations

Prevent user from saving an unapplied credit which can produce erroneous statement balances (SIGNIFICANT UPDATE)

Provide customer full address reference/confirmation on screen

Provide ability to input payment descriptions allowing user to note what payment was for or who payment was from; the description carries over to statements and G/L posting descriptions; add windows boxes to message lines

Default look-up to customer name

When saving into the transaction file, type field was not being set-up.

Tightened security access to A/R customer program.

Improved program operation/speed; also warnings when customer file is out of synch with transaction file.

Fix ESC pop/trap error message that can result from pressing ESC while applying payment amounts.

Previously this program considered a payment with an amount remaining as an "open invoice" making the processing of an additional payment on an account with a credit balance less than intuitive.

Add no lock when scanning in items. Internal change for scan segment order (was not creating any problems)

Integration with new active/inactive feature (note: payments can still be recorded for an inactive customer with outstanding balances; payments cannot be record for a customer marked inactive with no outstanding balances).

### **A/R-E Print Statements**

Eliminate "open only" option (can lead to incorrect balance forwards); instead provide option to "automatically" calculate the balance forward date starting with the first of the month that the oldest item has an unpaid balance.

Flip name capability.

Option to not print statements where the total balance is less than zero.

Adjustment for automatic calculation of balance forward date.

Add company fax number (if printing to blank forms).

Formatting changes to the blank statement form to be consistent with blank invoice forms and to fit into window envelopes.

### **A/R-F Print Aging**

Added salesperson range and SLSP on various report formats - users now have the ability to produce A/R aging reports restricted to one or a range of salespersons (as assigned under option A under A/R, i.e. the salesperson responsible for the account who may or may not have been responsible for the actual sale).

Add customer class range to restrict to a certain range of classes.

Add option to sort by customer name.

Add "aging calculation date" - allows user to perform aging based on desired date (in future or in past); transactions found are further limited by this date allowing the user to exclude transactions after the date entered.

Provides true "as of date" listing - when as of date selected, program calls entirely new program BKARTRH - customer transaction history report which among other things can provide a true as of date listing as long as A/R transactions have not been purged.

Update to new sorting feature when running in Windows mode; give user the option to start with first transaction with an amount remaining when printing for a single customer, fixed for name length, add current date to the report output.

Fix for spacing on the A/R listing report.

Fix for A/R listing relating to multiple terms.

New feature when selecting one customer to start as of a specific date as well as to skip to the first record with an amount remaining.

Add old style A/R as of in the event that user has purged their BKARINVT (A/R transaction file); improvements to A/R transaction/as of program for F2 look-ups, standard screen changes, when printing subtotals only do not print customers with zero balances.

Re-compile for new customer look-up list.

#### **A/R-G Print Cust Code & Name**

Customer look-up integration.

Default the from customer into the thru customer.

Re-compile for new customer look-up list.

Search key selection fix when in Windows mode.

#### **A/R-H Print Cust General Info**

Customer look-up integration.

Integration with new active/inactive feature; update relating to new style terms.

Search key selection fix when in Windows mode.

#### **A/R-I Print Cust Sales Info**

Fix valid message when invalid customer range entered (program was referring to product code instead of customer code).

New option re: whether to print customers with zero totals.



Move new 'print zero totals' question in program to ensure it handled correctly.

Re-compile for new customer look-up list.

#### **A/R-J Print Cust Mail Labels**

Add option for printing three column mailing labels for customers.

Calls new program BKARJ3.

Adjustments to 3 column labels (program BKARJ3) for printing to a laser printer in Windows mode (Avery labels - 5160).

Add country to label print-out.

Ask user whether they want to print country on continuous style labels; adjustment in number of lines between continuous style labels.

Integration with new active/inactive feature.

Add the "flip name" feature.

Change in number of lines printing per label (laser version/BKARJ3).

#### **A/R-K Print Cust Rolodex**

Re-compile for new customer look-up list.

#### **A/R-L Sales Tax Maintenance**

Allow user to create a "zero" rate tax authority.

Integration with new active/inactive feature.

### **SALES ORDER**

#### **S/O-A Enter/Chg Sales Orders**

Fix for rounding problem

Fix for not deleting notes if there has been a prior invoice

Fix for ESCape from BKICA when adding on fly - previously if you did not add a new inventory item, the program would let the user go past the product field

Messages warning user to save 50, 100, 249 items on S/O

Require user to enter a valid taxing authority  
otherwise non-taxable sales totals can never be accurate

Add line counter to screens

Automatically check for and remove a 0 numbered sales order

Allow access to job number field for pending orders

Warn user if selling price including any discounts will be less than average cost for regular type inventory items

New menu option after saving/entering freight allowing user to print packing slip, print sales order, print invoice, toggle ending lines ON/OFF to more efficiently handle what the user

wants to do at that point.

If line item price has been entered through as zero, leave as zero.

Add next S/O to initial screen; fix problem re: when you delete an item the screen totals were not being reflected correctly.

Fix for wrapping notes.

TIGHTENED SECURITY ACCESS - users can no longer add new customers, products, etc. unless they have been granted security access to the appropriate program. If they can enter sales orders but not print invoices, they will no longer be able to "backdoor" the password system as has historically been the case! For systems that have no password set-up, the program operates in the way that it has in the past.

Show user logon ID in the program header.

Changes/new option re: computing price matrix.

List jobs show last job first.

New ship date feature, show COGS in header; show three character day of week relating to order date, ship date and line item dates.

New feature - if credit limit is negative, blocks use of that customer in processing orders.

Adjustment for bringing in credit card info. into a message line in

Windows mode; adjustment for defaulting in job description.

In Windows mode, users would get bumped out to the menu at random interval. Resources issue resolved.

Add option to go to the job screen (option B under job cost) when a job code is input on a sales order.

Round-up sales tax.

Problem of Windows mode users getting bounced out intermittently when pressing ENTER in a product code list - attempt to resolve.

Ensure Yes/No response to message line "ready to print?" to avoid stranded pending S/O's.

Shipping label can be printed directly from here (as with a packing slip).

Recognizes "promotional" pricing set-up under POS option F.

Fix for CTL-I/CTL-N combination (attaching notes to line items).

Changes in the way that the program saves line items and when the page down trap becomes active to allow the program in Windows mode to retrieve line items for a previously entered S/O.

Day of week function can cause Windows program to exit to the main screen if left blank in the ERD field.

F2 look-up in product price was not showing the dollar amount for percentage price matrix type items in the Windows mode; fix for ready to ship flag when entering a message line.

Address problem of some fields being occasionally truncated so that look-up lists show information misaligned (caused by binary zeroes).

Change the default ship date to be initially be the ship date as entered in the top/header record and subsequently to be the last line item estimated ship date (ESD) entered. New feature whereby if the user changes the customer code on an existing S/O, user will be prompted regarding whether they want to bring in that customer's address.

Adjustment to printing of sales orders to ensure that the rightmost characters are not cut off in the Windows mode.

Integration with new inventory status feature; fix for menu display re: price matrices; change all CTL-C to CLT-O - CLT-C conflicts with NT (Cust Options trap).

Add "no lock" condition to line item file when printing a sales order.

When going to customer options and viewing the customer record, the customer's price level would be lost.

### **S/O-B Print Open S/O List**

When sorting by product code, provide option exclude items that have been shipped in full.

Fixes plus new subtotaling when sorting by S/O num or customer code - subtotals now based on actual pending units; show extensions and include units on backorder.

Fix on packing slip form relating to S/O num.

Fix for calculation of amount pending when a discount is involved.

Adjustment for location of amt pending when no matching line item found.

New date range filter, ability to limit to one salesperson, include the order date and salesperson on the report formats.

Various internal enhancements/fixes for F10 trap, defaults, up arrow, etc.

Re-compile only for new look-up lists.

Changes re: when printing by product code; ESCape problem when printing detail.

### **S/O-C Print Packing Slips**

Added terms description and ship via to packing slip.

Ability to be printed from sales order option A.

Major overhaul of packing slip format, full page, estimated shipping date, multiple copies, options to print/not print notes and message lines.

### **S/O-D Print Backorder List**

Re-compile only for new look-up lists.

### **S/O-E Release Sales Orders**

Re-compile only for new look-up lists.

Add new feature to give user ability to print released sales orders to facilitate the identification of orders that have are ready to be shipped.

**S/O-F Print Invoices**

Making print of notes conditional on the RTS flag

Allow user to enter date when coming directly from sales order entry (also solves potential posting date problem in addition to providing an added convenience)

Fix for 1 cent rounding problem - cost of goods sold

Additional check to prevent duplicate invoice #'s

If user has set "auto fill" backorders to Y then when printing an invoice from sales order option A, the program will automatically attempt to fill the backorder; invoices can now be generated directly from sales order option A even though an invoice has been generated previously.

Flip name capability.

Tighten security access - do not allow user to post invoices from here is password access to posting program has not been given.

The initials of the user's logon code is automatically included when printing invoices (below the ship to attention line).

Coordination with new option in billing set-up - see BKSYA.

Remove printing of the "this invoice is prepaid" line which may be inappropriate or inaccurate.

New ship date (true ship date will show on invoice)

Save the logon code into the ship header file.

Many new changes relating to ship dates, due dates, calculation, day of week showing on selection screen for invoice date, supplemental system file integration.

Ensure that only when invoice is printed, only one invoice is potentially posting.

Allow a "message line" only order/invoice to be processed.

Option so that user can decide whether to verify ship/due dates; internal enhancements.

Slight adjustment for the way the system finds the next invoice record to print.

Screen display fix re: backorder status default.

Add company fax to the "blank" invoice style form; do not print phone or fax if they are blank ("blank" invoice form only).

Format changes to the "blank" invoice layout so that spacing is the same for invoices and statements; do not print Attn: if ship attention field is blank .

If the customer selected review (do\_ship\_date) to "N" then the attention field was not showing on the invoice.

**S/O-G Post Invoices**

Automatically checks for valid number of system master records to avoid posting problems

Automatically checks and deletes blank inventory records

Fix for 1 cent rounding problem - cost of goods sold

Delete items shipped in full from posted order containing other backordered items.

Update for handling of tax authority; if not found no G/L posting was being attempted, handling for if prior year.

Change to default to post all to "N" when entering directly

Fix for wrapping notes.

Fix relating to posting of tax authority (relates to non-taxable sales and freight being included in non-tax sales).

Interaction with system supplemental file.

Interact with option F above to ensure that when one invoice is printed and then posted, only that invoice is posted and not any others.

Post COGS amounts to job cost transaction file when "automatically expense inventory items to COGS when received" is set to "N"; adjustment to value being saved to the inventory movements file.

Continued enhancements for invoice printing/posting.

New from/thru invoice date option when posting S/O's.

**S/O-H Print Shipping Labels**

Many changes, printing labels out of Windows mode, flip name, improved formatting.

Shipping label can be printed directly from S/O-A.

Problem with printing number of labels correctly in Windows mode resolved.

**S/O-I Recurring S/O Entry**

Resolution of users getting bumped out to menu after entering one or to recurring sales orders.

Changed so that recurring S/O's can be entered directly from the A/R-A program or new recurring S/O's created from A/R-A (just like new/existing sales orders).

Integration with new status feature.

**S/O-K Display Invoice History**

Show cost of goods sold that was assigned; show actual ship date.

New F3 (choose other key) options now exist when doing an F2 in the "Inv #" field that include sales order number (BKAR.INV.SONUM), order date (BKAR.INV.ORDDTE), invoice date (BKAR.INV.INVDTE) and due date (BKAR.INV.DUEDTE).

Re-compile only for new look-up lists.

#### **S/O-L Purge Invoice History**

Update for opening of location file when multiple companies are involved.

Re-compile only for new customer look-up list.

#### **S/O-M Quick Sales Report**

Quick report totals were sometimes incorrect when there were "held" sales.

Increase sizes of "holder" fields relating to number of invoices, etc.

#### **S/O-N Reprint Invoices**

When printing in Windows "direct" mode, bottom portion of invoice re-print was printing too low on the page.

Fix for wrapping notes.

Coordination with new option in billing set-up - see BKSYA.

Adjustment for printing lower section of invoice.

Show true ship date on re-print.

Remove the "you have credit and do not pay" section.

Fix for page feeds after printing notes.

New options re: whether to include word REPRINT and whether to indicate that the invoice being reprinted was prepaid (if only one invoice is being reprinted).

Similar changes as made to BKSOFF relating to company fax/phone numbers.

Format changes to the "blank" invoice layout so that spacing is the same for invoices and statements; do not print Attn: if ship attention field is blank.

#### **S/O-O Print COD Tags**

Updated so that any occurrence of "COD" in a term descriptions will print a COD tag. Previously the tags would only print if the word "COD" or "COD-CASH" was in the terms description.

#### **S/O-P Enter/Chg Ship/Due Dates**

Enter/change an invoice order's ship date.

### **INVENTORY CONTROL**

#### **ALT-I Global Inventory Look-Up Program**

Re-compile only for new product look-up list that shows status.

Re-compiled for list product code change (status put at end of the list).

#### **I/C-A Enter/Chg Inventory**

Resolution of error message when adding a new product from sales order entry in Windows mode.

New "view only" option so that even though someone else may be looking at a given inventory code, another user can still look at all of the information concerning that item.

Show record count on screen

Revise location list so that it would show all locations including potentially blank locations.

When doing a sales by month report, cost of goods sold totals were not being cleared, resolved.

Display inventory bitmap images (windows mode) via Shift-F9 or command click.

Make view only language consistent with other programs.

Units on order were not being synchronized in BKICLOC.

Allow access to S/O-A and P/O-A in 'look at' mode; attempt to address binary zero problem in the I/C location fields.

Add Y/N mask for taxable field; do not allow the type field to be blank and fix for taxable field help.

When entering S/O's or P/O's in "non-read only mode", user could lock themselves up if the line item containing that product was changed. Additional validation for the entry of G/L codes plus updates to show the pertinent G/L type based on the G/L code being entered.

Purchase order line items were not showing the location code.

Integration with new status feature (new field); program header changes now based on view only status. Called "status" rather than active because this flag is more than an active/inactive flag but rather has four possible values: A - product is fully active, I - product is inactive and is non-selectable anywhere, P - product may only be used in the PO module, R - product may only be used in conjunction with customer sales (sales order, point of sale).

Re-compiled for list product code change (status put at end of the list).

Possibility of duplicate product codes if two users both entering exact same (new) product code at same time; document F4 key in function list.

#### **I/C-B Print Price List**

Provide option to NOT show cost information on price list.

Re-compile only for new inventory list.

Search key selection fix when in Windows mode.

#### **I/C-C Print Sales/Purch Info**

Various fixes/enhancements relating to validation, listing, F2 traps, option to not print products with zero totals.

Re-compile only for new inventory list.

Change word customers to products when asking about whether to print

zero totals.

#### **I/C-D Print Avail/Order Info**

Report was usually not producing the correct results when one or a range of location codes was entered. Portion of the program re-written to fix.

Provide option to print just a summary total for ALL inventory items including total inventory value at a moment in time.

Fix for when there is just a single location (was not showing subtotals) and new option to only show subtotals.

When excluding items above reorder level, clarify that this is AT or ABOVE reorder level and skip records where the reorder level is equal to units on hand plus units on sales order (previously the program would still include such items).

Re-compile only for new inventory list.

Search key selection fix when in Windows mode.

#### **I/C-E Print Physical Check**

Added UM (unit of measure) field to report layout.

Re-compile only for new inventory list.

Search key selection fix when in Windows mode.

Fix for "from" product code when sorting by something other than product code; ability to print UOH and UOSO in separate columns, from and thru BIN filters.

#### **I/C-F Print General Info**

Re-compile only for new inventory list.

Search key selection fix when in Windows mode.

#### **I/C-G Adjust Levels to Phys**

Inventory movements file integration

Update for inventory movements file handling with multiple locations

Integration with new status field feature; remove the internal F10 trap - it is not documented and can create havoc.

When entering the adjustment date, check the "control" date as well.

#### **I/C-H Enter Price Matrix**

Re-compile only for new inventory list.

#### **I/C-I Print Price Matrix**

Re-compile only for new inventory list.

Search key selection fix when in Windows mode.

#### **I/C-J Global Price Change**

Program enhancements for rounding and speed.



Re-compile only for new inventory lists.

### **I/C-K Transfer Inventory**

Integration with new status field.

### **I/C-L Inventory Movements**

Inventory movements report update to include product description on the sub-total lines.

## **ACCOUNTS PAYABLE**

### **A/P-A Enter/Change Vendors**

New "view only" option so that even though someone else may be looking at a given vendor code, another user can still look at all of the information concerning that vendor.

Show record count on screen; check for and delete blank vendor codes.

Add ability work with the vendor options menu when adding a new customer code.

Default look-up to vendor name, force vendor name upper case.

Tighten up security access to other programs.

Update relating to coming into this program from A/P - B.

Make view only language consistent.

### **A/P-B Enter/Change Vouchers**

Improved manual check handling - allow for posting based on invoice date rather than check date; screen formats changed for invoice date instead of just date.

New checking in the history for possible duplicate invoice numbers.

Eliminate opening of temporary pick to pay file unless user is picking a voucher to pay to avoid conflicts/lock-ups with other A/P programs. (NOTE: this created a few initial problems in being able to edit previously entered amounts but these were subsequently resolved.)

Vendor address verification and ability to change on the fly.

Option to "process check now" for the voucher just entered; improved handling of pick to pay check file to avoid multi-user conflicts.

When trying to backout a manual check, resolved file opening/closing error message. Move the vendor address confirmation until AFTER it is determined that a new A/P voucher is being entered.

Tighten up security access to A/P-A; ability to change the invoice date when entering the invoice lines.

Check for possible duplicate check number when entering a manual check.

Fix for BKGLCHK check register date being saved as 00/00/00 instead of check date when a manual check is involved.

New feature - program asks if you wish to enter another transaction

for the same vendor to speed the entry of multiple vouchers for the same vendor.

#### **A/P-D Pick Vouch/Inv to Pay**

Improve list so that it shows outstanding invoices in order of date (in same order as an A/P aging) and to show the date of the invoice in the list; add status message while searching for outstanding invoices. New key field added to the BKPMTHLD/BKPMTAP layout/data file.

#### **A/P-F Print Checks**

Coordinate with new option in BKSYA allowing user to "force" all output in laser check format regardless of what other options have been selected in multi-printer maintenance (DOS mode) or in the INI file (Windows mode).

Take out reference to "direct" (causes page faults or otherwise stops users from printing).

Improve format of check. Eliminate having to void laser checks.

DOT MATRIX check type (7") printing in Windows mode capability provided (previously only laser check style printing was supported when printing in Windows mode).

Show number of records picked to pay.

Discount amounts were not being saved into the A/P transactions file.

Removed check number on top portion of laser check because the standard laser check forms do not contain a column for check number.

Check for possible duplicate check number.

Update for internal handling when there are more items than will fit on a check stub (to a laser printer).

When printing a check with more than 14 lines (most that will fit on one stub) to a laser printer in Windows mode, the "insert a blank piece of paper" message needed to be changed to tell the user to insert it not as the next piece but the one after.

Possible scrambling of city/state/zip (rare circumstance).

#### **A/P-G Print Aging**

Provides true "as of date" listing - when as of date selected, program calls entirely new program BKAPTRH - vendor transaction history report which among other things can provide a true as of date listing as long as A/P transactions have not been purged.

Add features similar to BKARF, ability to sort by vendor name, ability to select the aging calculation date.

Update to new sorting feature when running in Windows mode.

#### **A/P-J Print Vendor Purch Info**

Originally this program allowed a user to report on purchases in the context of received "purchased orders"; new options allows a user to summarize instead by A/P vouchers or by A/P transactions.

Move new 'print zero totals' question in program to ensure it handled correctly.

**A/P-K Print Vendor Mail Labels**

Program was not correctly printing to labels. Specifically changed to print to AVERY form 5260 when printing "three across" labels.

**A/P-O Void A/P Check**

Allow the user to specify the void check date (today's date) rather than just using the current system date; allow the user to specify the void check description/reason; make sure that the void check date is within the expected posting/fiscal year range; provide informational notice that the corresponding A/P vouchers have been restored and are again pending.

**A/P-P Print A/P Payment History**

Adjustment in chk\_break section to ensure that the checking account number is in a valid range.

**PURCHASE ORDER****P/O-A Enter/Chg Purchase Orders**

Fix for recalculating totals when existing P/O is retrieved

Fix for 1 cent rounding problem

Warning for hitting maximum/prevent program crash from hitting line limit

Fix for not saving notes attached to P/O's in Windows mode

Line counter screens as in sales order

New "total piece" count feature, shows total quantity count

Choose note in Windows mode not previously working, resolved.

Add the next P/O number to the screen; add the P/O description to the F2 look-up.

TIGHTENED SECURITY ACCESS - to be able to add vendors, customers, products, etc. "on the fly" a user must have password access to those programs. Previous to this update, the password system could be "backdoored."

Automatically delete zero numbered P/O's.

New CTL\_F option to go the first screen when in line items as in S/O-A.

Show the day of the week in connection with the order date, ship date, and line item ESD date; show received not invoiced and invoiced totals on the screen.

New feature re: CTL-V - can bring in A/P alternate addresses in the ship to.

Screen changes for RNI/invoiced amounts; show invoiced quantities on line items.

New feature re: CTL-V - can bring in A/P alternate addresses in the ship to.

Change to no locks to avoid lock-ups involving BKAPVEND and BKARCUST.

Fix for Ctl-V getting turned off; fix for this program turning on job cost globally after being entered; show invoiced quantities on screen.

Problem of Windows mode users getting bounced out intermittently when pressing ENTER in a product code list - attempt to resolve.

Fix for CTL-I/CTL-N combination (attaching notes to line items).

Add printed status to screen; do not allow negative prices on line items. Do not allow a purchase order number to assigned that exists in the history file; changes in the way that the program saves line items and when the page down trap becomes active to allow the program in Windows mode to retrieve line items for a previously entered P/O.

F2 was previously disabled when something had previously been entered into a product field.

New feature whereby if the user changes the vendor code on an existing P/O, user will be prompted regarding whether they want to bring in that vendor's address.

Add customer look-up into the "ordered for" field; function list display enhancements/fixes. New warning if a P/O has been printed previously.

Integration with new status feature.

#### **P/O-B Print P/Os**

If total is zero, remove words NO CHARGE

Coordinate with new option in BKSYA as to the inclusion of company information when printing P/O's.

Fix for wrapping notes.

Make printing of manufacturer codes optional.

Include the phone number from the system supplemental file on printed purchase orders.

Ability to print multiple copies.

New options to print company phone/fax as well as vendor phone/fax/account.

Streamline print P/O options.

#### **P/O-C Print Open P/O List**

Re-compile only for new look-up lists.

#### **P/O-D Receive P/Os**

More changes than can be fully mentioned here - complete change in user interface, provides ability to change units and prices at the same time, fix for ensuring that a date is input when processing a partial receipt, resolution for job cost integration, new features to show/verify amount being processed and units being received, match totals with invoice being processed, fix for job cost integration - extensive and significant enhancements.

Adjustment for inventory value calculation

Allow negative partial receipts

When posting to job cost, include the product code for cross checking (in the transaction file).

Add code to potentially identify problems in connection with BKICLOC.

Allow users to change prices on negative amounts; adjust inventory value and average cost

Adjustments for when high quantity of units are involved; new checking function to identify potential file errors and out of balances.

When making a price change, program was not calculating correct average cost and total value when invoicing a previously received P/O and there was a price change when invoicing.

Save out freight costs to new field.

Minor change in handling of job cost transactions; RNI not getting zeroed out when full receipt involved.

When partially received negative P/O's, quantities were not getting saved out into the history file correctly.

New routines to ensure the I/C asset and A/P liability codes can be locked; new routine to ensure that vendor code is found and locked - otherwise the A/P transaction record may not be created nor the appropriate G/L postings made (multi-user situations); similar routine for the I/C master file.

Add "auto increment/scroll" when entering partial receipts; additional handling when I/C G/L asset code is not found.

Ability to partially invoice negative amounts, new partial receipt list handling options, default quantities, new menu selection option to facilitate handling.

New capability to change base price/price matrix for products received when current cost exceeds last cost or base price itself; allow user to receive more than quantity originally ordered.

New prepayments feature when terms are prepaid (see BKAPB), program will automatically make postings based on prepayment account set-up in the supplemental system file and will not create an unpaid voucher as would otherwise normally be the case.

New window when receiving line items including showing the product description on each line item, update/refinements.

Adjustments to enhancements involving partially receiving negative units; updates for handling of negative quantities; file locking, check price changes.

When choosing the "Invoice" option and the user indicates that they wish to enter individual quantities/prices, items listed are restricted to those that have not previously been processed; problem of choosing the "Close" option when there are message lines resolved (message line were also not getting saved correctly into the history file when choosing the close option which has also been resolved).

Do not allow user to press ESCape when creating an invoice and when the system has committed past the point of when an ESC can be allowed; confirmation that the user wants to ESCape prior to that point; internal changes relating to handling of traps; updated error message in the event of an inventory/vendor file error.

If product type is "N", do not ask if user wants to edit price; ability to enter/change discount percentage when receiving and taking any discount

into account when computing price/cost.

**P/O-F Purge P/O History**

Re-compile only for new look-up list.

**P/O-E Display P/O History**

View lines/pause when looking at P/O's; show RNI and invoiced amounts on screen; when printing reports, new date of receipt date range option.

Screen changes for RNI/invoiced amounts; show invoiced quantities on line items; show freight cost.

Re-compile only for new look-up lists.

**P/O-G Reprint P/O**

New program that provides the ability to re-print a P/O that is in history.

**POINT OF SALE****POS-A Run POS Register**

Resolution for totals on bottom not showing on screen in Windows mode.

Lay-a-way program (BKPOSACL - called from option A) - resolution for commission posting, tax maintenance and A/R sales YTD.

Cash drawer was not opening when (1) running in Windows mode and (2) connection was via a serial port. Resolved problem except for closing of DOS Window.

Improved/speedier look-ups for prior sales for reprints, old sales. Can reprint/void from any register.

Corrected error encountered when giving cash back on 80 column receipt (program is BKPOSAL).

When using a cash drawer connected to the parallel port and running in Windows mode, system would send a form feed to the printer when attempting to open the drawer. New BELL.TXT file which can be used to change which character is sent to the cash drawer, LPT4-9 can be supported when running POS in Windows mode.

Resolve problem of cash drawer opening via parallel port in Windows mode (involves new POSOUT.EXE, a non-TAS program). Left arrow trap does not work in Windows mode to change a quantity - added new up arrow trap that works in both Windows and DOS mode.

Negative price update, fix for clerk field size, sales tax rounding, warning if price exceed the \$9,999 limit of POS entry.

Coordinate assigning of the next invoice number with the sales order history file - otherwise conflicts between POS invoice nos. and S/O invoice nos. can result.

Fix relating to finding default payment type for non-default.

Update relating to assignment of invoice numbers (invoice numbers not appearing on POS receipts).

New feature - program asks if everything is correct allowing user to

go back to product code or payment entry if desired.

Integration with new active/inactive cust and product status fields.

Quicker refresh for showing total.

#### **POS-B Print POS Reports**

Re-compile for new look-up lists.

Removed opening of the BKPOSPST/POS posting control file.

Search key selection fix when in Windows mode.

#### **POS-E Post POS Transactions**

Inventory movements integration

When sales was not found, program would hit an endless loop.

Additional invoice history number checking.

#### **POS-H Cash Out Report**

Integration with new active/inactive features.

#### **POS-I Lay-a-way Transactions**

Re-compile only - new look-up lists.

#### **POS-J POS Configuration Maint**

Integration with new active/inactive features.

#### **JOB COST**

##### **J/C-A Estimates/Change Orders**

When printing estimating estimates, mark-up amounts and hence total job estimate amount does not agree with the calculated amount shown on screen. Estimating program (BKJCAR1) was not taking the weighted average of mark-up amounts.

Reduce/eliminate possible file locking conflicts with the A/R customer file.

Integration with new customer active/inactive field.

##### **J/C-B Projects**

Allow user to change job name on screen #2 and new F10 trap; allow user to come to this program via S/O-A.

##### **J/C-C Transactions**

Improved project transaction detail - counts payments as negative amounts, including subtotals and totals for units, sub-totals billings and expenses and shows profit to date for each job.)

##### **Print Project Estimate**

Re-compile for new look-up lists.

**Print Project Listing**

Fix for historical project code look-up

Re-compile for new look-up lists.

**Print job cost analysis**

Fix for historical project code look-up

Add option to print on separate pages

Update relating to printing jobs on separate pages.

Re-compile for new look-up lists.

**Print work-in-process report**

Re-compile for new look-up lists.

**BILL OF MATERIALS****B/M-A Enter Bill of Materials**

Re-compile for look-up change in library

Cosmetic fix in function list.

Integration with new status feature.

**B/M-B Print Bill of Materials**

Re-compile for look-up change in library

Same as B/M-A plus fix for page break problem.

**B/M-D Print BOM Availability**

Re-compile for look-up change in library

**B/M-E Print To-Build Orders**

Re-compile for look-up change in library

**B/M-F Build/Un-Build Process**

Made the location display for the product code entered specific to those locations available for the item entered.

Inventory movements integration

Re-compile for look-up change in library

Fix for finished goods average cost/value computation when doing an unbuild and the prior average cost was <> 0.

Various enhancements/fixes relating to more than one user being in the "build" process at the same time; update/fix for average cost and inventory valuation (when sub-assemblies had insufficient units, finished goods average cost was being set to the last item built instead of the rolled cost which ultimately would impact cost of goods sold as well).



When "auto building" from S/O-A, program was previously not defaulting in the number of sets as being equal to the build quantity.

#### **B/M-G Print Build History**

Re-compile for look-up change in library

#### **PAYROLL**

##### **P/R-A Enter/Chg Employees**

Automatically remove 0 number employee records; NOTES display fields if there are notes for an employee; display employee bitmap images via Shift-F9 or command button click (windows mode); show number of records in employee master file.

Additional info/handling for Michigan state income taxes.

New ^W and ^P options that show W-2 and Pay history.

Integration with new active/inactive feature.

General ledger code validation changes.

##### **P/R-B Enter Pay Info**

Recalculates correctly pre-tax deductions if changed

Option to "stop" normal other deductions from coming in for bonus/extra checks.

For W/C "G"ross calculation, fixed problem where W/C expense kept changing if user indicated that everything was not okay (impacts states such as Arkansas that use the "G" option)

Allows user to input a check for a special deduction amount (perhaps an employee advance) without requiring that entry of other amounts.

Update in the event user has either not left a zero or a high maximum limit amount when entering payroll tax table amounts for state income tax withholding.

Fix rounding problem when bringing in dollar amounts from time cards.

Change relating to fix above; hourly rates were being doubled when no time codes were entered for an employee using the DFLT-REG and DFLT-OVT codes (pertains to time cards only).

New option when bringing in time card hours to have system calculate overtime hours rather than keep is separately in time card file.

Clear time card amounts when user is using new feature above.

Update for Missouri exemptions.

Update for handling of Michigan state income tax withholding.

Add warnings so that if a user is trying to process the first checks

of a new year, the system will provide a warning about W-2's (if the user proceeds to process, while a warning will be given when they go to print checks, if they process based on prior data, various payroll taxes could be calculate incorrectly and ultimately processed into a check in the new year. Update for Mass. calculation.

Update to new warning placed into effect

Get time card hours section calculation changes for possible rounding variance.

Change to how the misc deduction is brought in (if commission brought in, misc deduction won't come in (users should usually run PR-B first for an employee before running PR-J).

#### **P/R-C Print Payroll Reg**

New layout that is easier to read and which provides a calculation at the end to assist in determining the associated federal tax deposit.

Add SDI to the payroll register layout.

Get time card hours section calculation changes for possible rounding variance.

#### **P/R-D Print Payroll Checks**

Add print page formatting command - remove print all not yet printed variable (dangerous)

Coordinate with new option in BKSYA allowing user to "force" all output in laser check format regardless of what other options have been selected in multi-printer maintenance (DOS mode) or in the INI file (Windows mode).

Adjust printing of the "pay amount" etc. lines so that they are the same as when printing an A/P check.

Add same "Compress dollar amount" feature as in A/P checks.

DOT MATRIX check type (7") printing in Windows mode capability provided (previously only laser check style printing was supported when printing in Windows mode).

Add extra line between checks when printing to a dot matrix printer.

Add regular pay rate to check stubs.

Logic for new "F" fixed/flat rate accrual.

Adjust for printing to a laser printer.

Put time card entries into history automatically even when time card entries are zero.

Check for duplicate check numbers; ensure same spacing as when printing A/P checks.

Adjustment for printing on laser checks.

Time card/regular pay conflict resolved.

When not compressing and there was a voided check, extra line was

printing causing check misalignment.

Get time card hours section calculation changes for possible rounding variance.

#### **P/R-F Print Quarter Info**

New option/program to print a FUTA/SUTA wage list. This option allows the user to specify for a given employee/department range the ability to use the quarter to date fields for purposes of the calculations which shows excess wages or to use the payroll history file so that a wage list can be generated even though the quarter to date information has been cleared.

Update to the FUTA/SUTA list program.

Further update to the new FUTA/SUTA program called by this option.

FUTA/SUTA report (BKXSPR1) - eliminate VOIDED check amounts from being calculated into the totals.

#### **P/R-G Print W-2s & W-2 History**

W-2 form printing for continuous forms revised to allow for gross wage option on local wages, two localities, user specified amounts for boxes 10 and 13 of W-2 form.

Updated for '98 IRS changes (Box 15, subtotals), new option to print W-3, save information to new W-2 history file.

Eliminate clearing of the BKPRSALE information when running W-2's because we already do that in the SY-K program (year end).

Laser W-2 program (BKPRGL), completely updated with '97 features added to BKPRG plus new features to print W-3, print multiple sheets, updated for '98 changes to Box 15, subtotal changes, save information to new W-2 history file.

#### **P/R-M Transfer P/R Taxes**

In SY-D (PR/GL interface), a user can leave the vendor code blank but in this program (transfer payroll taxes), vendor codes were being required for all deductions before it could be used. Modified so that special, misc and user defined deduction cumulative amounts can be cleared out and not transferred to A/P.

Last purchase date, outstanding amounts were not being updated properly.

Ability to enter the transfer date and appropriate fiscal year/control date validation (user no longer restricted to using the system date).

#### **P/R-N Print Pay History**

Allows for retrieval of employee history even if employee was terminated and record was deleted during W-2 processing.

New option to exclude employees terminated in prior years.

Increase sizes of employee subtotal and grand total fields

Look in new W-2 history file if terminated employee cannot be found in employee master file.

New report option to print an hours summary.

New report options to print a separate pay summary and tax pay summary; add PR date, check # and voided line to these new reports and to the hours summary; alignment adjustment to hours summary.

**P/R-O Purge Payroll History**

Change to default to "N" to prevent accidental purge.

**P/R-P Print Time Card Info**

Increase size of hours subtotal field.

Fix when selecting an employee number range.

**P/R-Q Enter Time Card Rates**

Dramatically speed-up program operation when the employee TC file accumulates records.

BKPRHW2 (new program called from BKPRG)

Display W-2 history program, browses new datat BKPRW2. 12/98

BKPR941 (option B)

Delete any blank BKPRGLFL records which could prevent FICA rates from coming in properly. 3/98

BKPRW2\* (option L)

Updated for changes to the "2T" line, user interface and internal enhancements. 12/98

## 5.2 Cumulative 97-99 remainder part II

### SYSTEM MAINTENANCE

#### S/Y-A Enter/Chg Company Info

Printing company info. on P/O's was previously linked to the same field as that for invoices and statements. Separated this out with new option under sub-menu choice " C - Enter/Change A/P P/O Defaults" to handle. (NO DATA FILE LAYOUT CHANGE.)

Under sub-menu option " D - Enter/Change Checking Accounts" provided two new screen fields that allow the user to force either A/P or P/R checks to a laser so that regardless of what other settings exist, the laser format will be utilized in either DOS or Windows mode. Allows user to correctly preview in a screen list how the check will print. (NO DATA FILE LAYOUT CHANGE.)

New option to provide users the ability to look at each of the A,B,C and D screens without forcing other users to exit out of what they are doing.

Automatic check to make sure duplicate records in BKSVMSTR do not exist.

Fix re: question about resetting fiscal year date; ensure that the fiscal year start date beings with "01"; ensure that a valid RUN program path is input so that system is not potentially disabled.

Disable check for changes related questions, i.e. set automatically to false (they create move potential havoc than solve problems)

In connection with the question relating to whether you want company name and address to print on invoices and statements, provide new option "Z" that allows users to NOT include company name, etc. on invoices but DO include that information on statements.

Change in day "01" validation in the event an international style date is being used.

Resolve potential locking problem when running the system supplemental program; G/L look-up lists were not starting at the appropriate G/L "type"; program was not validating G/L codes; update similar to that made in BKSVD; fix retained earnings look-up problem.

Integration with new active/inactive feature.

#### S/Y-B Enter/Chg Terms Info

Prevent entry of a terms number of "zero"

#### S/Y-C Enter/Chg Password Info

Ensures that passwords are entered in UPPER CASE otherwise password validation will not work and users can easily lock themselves out of the system.

Update for quotes and reports security levels (15 and 16).

#### BKSYSUPP

New fax number field added. 5/99

Allow user to enter a control date even if it is before the fiscal year start date 12/99

**S/Y-D Enter/Chg PR/GL Interface**

Provide new vacation/sick accrual rate - "F" fixed or flat per pay period.  
Accrues hours at a flat rate.

F2 look-up for G/L codes sometimes starts at the end of the list making it look like G/L list is "blank" - resolved.

Integration with new active/inactive features.

**S/Y-E Create/Chg G/L Accounts**

Automatically "set" a G/L code's debit/credit based on whether it is an A,L,O,I or E - previously the program allowed the user to change an expense account, for example, from a [D]ebit to a [C]redit. Even if an expense account is a contra account, it must remain a [D]ebit or the financial statements will not print correctly. User no longer needs to input anything into in this field, program operation will set it up automatically.)

Changes similar to BKGLA, show fiscal year start/beg date on screen for reference, clean-up screens.

Integration with new active/inactive features; new entry field.

**S/Y-J Multi Company Maint**

Creates Q\*.B\* files as well as BK\*.B\* files when adding/deleting companies.

**S/Y-K Year End Routines**

Program was not clearing out all sales tax collected fields

Added additional warning re: clearing of salesperson and tax authority files.

**S/Y-N Purge Old A/R & A/P Records**

Provide warning that we recommend users do NOT purge A/R and A/P transactions.

Re-compile only in light of past structure changes.

**SPECIAL**

BKAP1099 (print 1099's)

Major updates/changes including ability to output in magnetic media format for most common type of 1099. Ability to "review" amounts and to use check history or last year purchase amounts and to match 1099 type to vendor record. 7/97

Cosmetic change re: updating screen to show "type" selected. 12/97

Significant formatting updates, new laser option. 1/99

**BKPRW2 (option L)**

Fixed for position of medicare withholding amounts when generating file.  
(7/97)

## FILE UTILITIES

BKSYNOTE.RUN - fixed for harmless message that occurs when something is typed into a note and then the ESCape key is pressed

Make your own report - the "filter" applied to a report would not work, problem fixed in the BKMKRPT.RUN (source not available).

## MISCELLANEOUS

Utilities option H (TAS NOTES) - updated to allow for "code" range filter

ALT-I (from anywhere within Advanced Accounting) now shows units on backorder as well as other units information

## 5.3 Post 2001 release updates

Information about program bug updates made since the very first 2000-2001 release and incorporated into the 2001 updates are outlined below (listed chronologically). Some of these relate to fixes for newly introduced items, some relate to previously existing issues. Users who have purchased the updates and who do not have customized systems should periodically check this section on the web site and download the latest ADVRPOST.EXE in the General Downloads section on the web site. The exact link is:

<http://ftp.addsuminc.com/adv/ADVRPOST.EXE>

(developers should send an E-mail request to [support@addsuminc.com](mailto:support@addsuminc.com) to obtain the corresponding source updates)

**PO-A** - there was a problem with being able to save a purchase order with messages lines - this has been resolved (1/15/02)

**SO-A** - upon entering the terms of a sales order, the program now does some credit limit checking but was doing so even when the customer had no credit limit - this has been resolved (1/15/02)

**DDF's** - these are important for users who may be using Crystal Reports or some other software to access the data outside of the software - these have been added to the 2001 standard run updates. See also the topic [accessing data outside of system](#). (1/17/02)

**BM-F** - a minor but significant change was made relating to the parent part's location value which then impacts average cost (all BOM users need this update before building/unbuilding with the 5.12c release (1/18/02)

**Salesperson look-up in SO-A, SO-I, SO-M, AR-A and AR-I** - this look-up had been previously changed because of a display problem in the Windows mode, however, in the DOS/text mode, selected salesperson codes were not bringing brought into the underlying field (1/21/02)

**AR-C** - when saving to the new AR check history file, the program was stopping and asking for invoice details when non-sales history transactions were involved (for example, finance charges); this has been updated and substantially improved internally and also now check the AR voucher file as well as the sales order history file for terms information (1/21/02)

**IC-A** - for the Windows mode, the button for ALT-M has to be displayed as @M in order for it to be "clickable"; DOS/text users will still see ALT-M. Note that this shows in the function list only when adding a new product. While there isn't a display which indicates ALT-M is available for existing products, in the Ctrl-PgDn (^PgDn) options, it can be selected there as option 7 which does also

indicate that it is available as ALT-M (1/21/02)

**QUOTE option B** - in addition to the salesperson look-up issue, when creating a quote from an existing quote, the note number from the prior quote was not being cleared which then tied the old note number to the new line item (1/21/02)

**Addsum utilities "unpost" program** - the unpost program was not saving out records to the inventory movements file (1/21/02)

**AR-C** - eliminated any need for any user interface with AR check history file (1/23/02)

**IC-A** - screen not mounted problem when adding more than one type "N" item in a row without leaving the program, Windows mode has never shown type "N" GL codes when first bringing up an existing item and this has been fixed, user restricted to a location was not able to add a location record preventing them from being able to add an inventory item at all, some random GL code validation quirkiness resolved (1/23/02)

**SO-A, SO-I, PO-A, Quote-B** - when changing/editing a line item, wasn't hitting validation creating problems especially in SO-A with the system thinking that it needed to check units for non-inventoriable items, users restricted to a location could edit other locations and could delete line items related to other locations (resolved on all accounts), in quote option B the program "where" location wasn't looking in the central system file as with other programs (1/23/02)

**IC-A** - additional internal changes to further simplify/improve GL validation especially for GL accounts with departments (1/25/02)

**Quote printing** - minor change to the separate quote printing program BKQUPRT (introduced with 2001 updates) the fixes a problem concerning the printing of the user's phone/fax numbers on the quote. (1/28/02)

**SO-J** - the generate recurring sales order program was still updating the inventory master file, internal key change for consistency (1/28/02)

**Quote transfer (option C)** - when transferring a quote with a type "N" item, the program was trying to find a location record relating to a user permission check (1/28/02)

**Special utilities when user has more than one company** - certain special utility programs called during 2000 and 2001 installation were only updating the "main" or default company and not running thru the data of other companies; also in the 2000 updates, the QUOTEL (quote line items) and BKARRIVL (recurring sales order line items file) were not being internally re-numbered. The 2000 internal update programs BK2000 and BKLNUM were updated as well as 2001 programs BK2001 and BKCVAVGC. The ADV2000.EXE and ADV2001.EXE install programs have been updated and users who install on/after this date using the EXE's dated 1/28/02 via files downloaded from the web site will have the latest updates; users who have already run the updates should NOT run them again - the only thing that those users should do is to run the BKCVAVGC in each and every company OTHER THAN their main/default company. The BKCVAVGC.RUN is the only one of these utility programs that is in the ADVRPOST.EXE for this purposes and has been updated so that if it is run standalone, it will provide an appropriate warning message. Your BKICLOC.B\* files should be backed up before running BKCVAVGC.RUN. The normal 2001 install automatically deletes BKCVAVGC.RUN automatically and if run manually, we recommend that you delete it as well to avoid the possibility of it being run accidentally again in the future. (1/28/02)

**Addsum utilities menu and unpost program** - were updated to check for a logon code which could otherwise prevent a user from using ALT-1 to go into some programs. (1/30/02)

**AP-A** - minor change to reset the user logon code which otherwise would prevent a user with logon codes from looking at pending PO's (1/30/02)



**Main menu program** - when using ALT-1 from a running program, the main menu program would lose the user's logon code and therefore could defeat security and user permission checking (fixed); when "logging in again" or changing companies, use of ALT-1 could bypass user logon/password entry (fixed) (1/30/02)

**SO-A** - when BOM was enabled, the user permission that otherwise does not allow a user to go negative was not being tested. (2/11/02)

**Addsum utilities** - in the IC synch, PO and SO delete utilities, a small change was made to ensure that line item types where notes are attached to message lines were being correctly handled; the files BKARINVL and BKAPPOL were added to the zap binary zeroes program along with various screen and user message changes. (2/12/02)

## 5.4 Troubleshooting installation problems

Here are some of the issues we've found with users who have had difficulties installing the updates (in the vast majority of cases, the user did not encounter any problems, i.e. these are the exceptions):

Not understanding how to download a file from the web site and not knowing how to run a self-extracting EXE file (if installing from the web)

Installing the updates when other users are in the system creating problems with data file restructuring and/or with being able to physically install the updated RUN programs

Trouble installing files that were previously marked as "read only" or the user who is installing does not have sufficient user rights (in one case involving a Novell system, the updates had to be run on the user's local C: drive - note in doing this it is critical that default dictionary path and file location settings

are drive letter independent, otherwise those must be changed before doing this)

Installing to a back-up copy of the software where some software settings were still pointing to a "live copy" (example: user makes a back-up to a different directory but has default dictionary path setting that points back to the "live" system - so the update puts the RUN programs into the backed up directory but restructures the dictionary in the "live" system)

The FILELOC "location" setting has been changed by via the maintain file location utility or via maintain database to point to the wrong directory, an invalid directory or in any event a directory that is different where the system is installed

The user is running other software that interferes with the install program's ability to run through complete (Norton Anti-Virus had to be disabled in one case)

The user interrupts the installation program before it is able to complete itself (the license screen appears and the user cancels the installation at the point and does not allow the install to continue

COMMAND.COM is not in the user's path and can't be loaded (the install programs were changed to attempt to overcome this possible problem)

## 5.5 DOS vs. Windows mode

Advanced Accounting 5.1 runs under one of two "modes" - DOS or Windows. This has NOTHING to do with whether your PC is running under Windows or not.

When Advanced Accounting 5.1 was originally released in late 1996, the bulk of the user base was still running DOS or Windows 3.1. So as to not require users to update their hardware and keep the new system as compatible as possible with the prior 5.0 version, the Windows mode was made to be cross compatible at the program level and runnable under Windows 3.1. For most existing users, this was a large benefit.

However, this means that the Windows mode of Advanced Accounting has the same limitations as Windows 3.1 and in general has a lower resource threshold than does the DOS mode.

We have done everything possible to ensure that every program option/feature is available and works the same in both modes even though this adds considerable additional development time.

However, the Windows mode in the current version is best suited for special uses such as printing to a printer that requires a Windows printer driver and can be printed to from a "DOS" application. For commonly/heavily used data entry programs (for example: sales order entry) we do not recommend use of the Windows mode as it is less forgiving of user error, conflicts with other software, and resource consumption. In fact the DOS mode is the robust mode of choice for Advanced Accounting 5.1. The DOS mode in fact has significantly more resources available to it than does the Windows mode and runs under all operating systems released by Microsoft to date (including XP). In fact the

DOS mode of Advanced Accounting 5.1 and Windows 2000 is the best possible combination, all other things being equal.

## 5.6 Causes of data file corruption

The potential causes are many, here is a sample list:

Faulty hardware (one bad network card anywhere on the network can create havoc; bad memory chips, motherboards, hard drives, hard drive controller, hub, network wiring)

Failure to use a UPS on every PC on the network - and a power blip occurs

### Opportunistic locking

Running different versions of Btrieve (which are accessing the same data files) within the same environment/network

Old or defective network drivers

Software conflicts

Anti-virus software running in the background and scanning data files

Network-user rights/shareability

Viruses

Electrical/magnetic interference - for example wiring crossing or PC's near fluorescent lighting, copy machines or soft drink machines on the same circuit as any of your PC's; lightning storms, electrical surges/spikes of all kinds, boom boxes located too closely to network hardware

Importing data into Advanced Accounting data files via ODBC or third party software

Anything that causes a blue screen of death or that makes your PC "freeze" or that causes your PC to lose its network connection

## 5.7 Uninterruptible power supplies

Make sure that EACH AND EVERY WORKSTATION on your network is attached to an uninterruptible power supply (UPS). The importance of this cannot be overstated. The fact that your host/server PC

may be attached to a UPS **is NOT enough**. All PC's on a business network that are accessing any type of database should be connected to a UPS.

## 5.8 Disable opportunistic locking

### Background

Opportunistic locking which is also called "oplocks" is an operating system feature which attempts to improve performance by caching files. It is important (not only for Advanced Accounting but many other database software systems) to disable opportunistic locking when running with the database engine that comes with the standard product (which is workgroup engine)

**IMPORTANT EXCEPTION:** If you are running a client-server version of Pervasive.SQL with Advanced Accounting, then this section does not apply to you and there is no known conflict with oplocks (and in fact, it will improve performance). For further information about using Pervasive.SQL and Advanced Accounting please see further information on our web site under Software.

### Operating systems impacted

Most operating systems (even Linux) have an opportunistic locking feature. Novell however disables opportunistic locking as its default and therefore this is usually not an issue with Novell. If you are using a Novell server, simply make sure that oplocks have not been enabled. In contrast, Microsoft systems enable opportunistic locking by default. Opportunistic locking must be disabled on all PC's and at BOTH the workstation and server/host levels.

### Microsoft specific information

The remaining information is provided as a convenience and as a reference but as with other information provided in this guide, we do not warrant in any way that this information is accurate, current and/or appropriate for your network system and you should normally refer this to your network consultant or information technology person for proper implementation.

### WIN 95 (peer network)

In WIN95 you must first make sure that the updated [VREDIR](#) has been installed. Then you should also make the following registry change:

```
HKEY_LOCAL_MACHINE\System\CurrentControlSet\Services\VxD\VREDIR
Value=DiscardCacheOnOpen
Binary Value Data=01
```

We also recommend disabling the new file sharing and locking semantics and disable write-behind caching for all drives. Go to Control Panel --> System --> Performance --> File System --> Troubleshooting and click on the following two items:

- Disable new file sharing and locking semantics
- Disable write-behind caching for all drives

### WIN 98 (peer network)

Make the same registry change as for WIN 95 and also disable the new file sharing and locking semantics and disable the write-behind caching for all drives.

## WIN NT 4 (including Small Business Server)

### NT server:

```
HKEY_LOCAL_MACHINE\  
System\CurrentControlSet\Services\LanmanServer\Parameters  
EnableOplocks = 0
```

### NT client:

```
HKEY_LOCAL_MACHINE\  
System\CurrentControlSet\Services\LanmanWorkstation\Parameters  
UseOpportunisticLocking = 0  
UtilizeNtCaching = 0  
UseLockReadUnlock = 0  
UseUnlockBehind = 1
```

### 95/98 clients:

```
HKEY_LOCAL_MACHINE  
System\CurrentControlSet\Control\FileSystem  
DriveWriteBehind = 0
```

This is not meant to be an exhaustive guide. See for example Microsoft knowledge base articles Q142803 and Q174371.

## Novell

Novell Sites running Novell 4.0 or later should obtain latest patches. Older sites running should download a fix from the Novell site to disable the cache which has also corrupted site data.

If you are using Client32, ensure version 2.2 or later. Set File Cache Level to Zero.

### WIN 95/98 running Novell client:

```
HKEY_LOCAL_MACHINE  
Network\Novell\System Config\Netware Dos Requester  
Cache Writes = "OFF"  
Opportunistic Locking = "OFF"
```

## WIN 2000 and XP

Issues are generally similar to NT. Entries should be made to both server and workstation:

### 2000 Server:

```
HKEY_LOCAL_MACHINE\  
System\CurrentControlSet\Services\MRXSmb\Parameters  
OplocksDisabled = 1
```

```
HKEY_LOCAL_MACHINE\  
System\CurrentControlSet\Services\lanmanServer\parameters  
EnableOplocks = 0
```

### 2000 or XP Client:

```
HKEY_LOCAL_MACHINE\  
System\CurrentControlSet\Services\lanmanWorkstation\parameters  
UseOpportunisticLocking = 0
```

If 2000 or XP is being used simply as workstation on a peer network, we would still recommend

making the above "client" change.

### **More resources**

More general references on this issue:

130922

124916

129202

126026

219022 (NT and Small Business Server)

296264 (configuring opportunistic locking in Windows 2000 - server and workstation)

See also Novell's web site ([www.novell.com](http://www.novell.com)). There are also numerous other references to this issue on the web.

## **5.9 Anti-virus software**

It is essential that anti-virus software NOT be set to scan the directory where Advanced Accounting is installed; it is especially critical that Advanced Accounting's data files are not scanned in the background during normal day to day use. Advanced Accounting's data files have a \*.B\* extension. Adjust your anti-virus software to not scan files with this extension. Better yet, only have your anti-virus scan your Advanced Accounting directory on an "on demand basis."

Sometimes problems are reported with Norton Anti-Virus (NAV) in terms of decreased performance and some sites report random crashing when printing with NAV. Simply disabling NAV may not be enough; to troubleshoot a problem that may involve NAV, you may need to completely uninstall it.

The error Windows error message:

Exception ERES not found in module TP5WIN.EXE

appears to be linked to NAV 4.0 and should you encounter this message, you will need to completely uninstall NAV on the PC experiencing the problem.

## **5.10 Disabling power management**

The power savings features found on most computer systems are typically counter-productive in a business environment and can lead to a variety of technical problems and can even disabled a PC's resources right in the middle of an installation. They are also suspected to be the cause of network disconnects. It is strongly recommended that power management features be disabled on all PC's that run any version of Windows (including the server or host PC). This is normally accomplished through the appropriate Power management icon in the Control Panel. If applicable, system standby as well as hard disk power management should be set to "Never."

Some PC systems have a BIOS setting that may also control power management settings and that should similarly be disabled.

## 5.11 VREDIR/WIN 95

If you are using WIN95 in a Microsoft network, make sure that you are aren't using the original defective VREDIR network redirector. VREDIR.VXD must be dated 2/11/97 or later.

Relevant Microsoft knowledge base articles relating to this issue include: Q152186, Q165403, Q148367, and Q142803.

In addition you will need to make a registry change. See the section on [opportunistic locking](#) for further information.

## 5.12 Networking protocols

Advanced Accounting will support common network protocols in use including IPX, TPC/IP and NetBEUI.

Any unused network protocols should be removed. By default, Microsoft will install more than what is needed. Unless you have a Novell server or specifically require IPX for some other reason, it is recommended that all IPX protocols are removed.

## 5.13 Lock violation delay

Failed lock requests can cause long delays on Microsoft networks (not an issue with Novell networks). WIN NT (and as far as is known, 2000 and XP also) adds a delay of 250 milliseconds for every failed lock request as opposed to about 50 milliseconds with Novell. A value of between 20 and 50 ms is recommended. Add the DWORD value to the registry as follows:

```
HKEY_LOCAL_MACHINE\  
System\CurrentControlSet\Services\lanmanServer\parameters  
LockViolationDelay = 20
```

The above value may need to be fine tuned if a file starts to become dominated by a single workstation so it is possible for an active workstation to dominate access especially because WIN 95 (and presumably 98) PC's do not have any lock violation delay.

Source: Pervasive knowledge base

## 5.14 Slow file opens

Faulty network interface cards are known to produce extremely slow file opens (as well as potentially cause data file corruption).

Source: Pervasive knowledge base

## 5.15 Realtek NIC's/WIN98

Certain "Realtek" drivers are known to be defective. WIN98 will automatically install a driver for it however that driver is defective. You must install the driver from the disk that came with card or download it from the manufacturer. Or use a different brand of network card.

## 5.16 XP Fast user switching

While this is considered to be one of the benefits/features of XP, many sites are reporting problems with fast user switching and a number of accounting software/database sites (and even anti-virus software providers) are not supporting XP when this feature is enabled. It is highly recommended that fast user switching be disabled.

For information as to how to disable, see Microsoft Q279765.

## 5.17 XP Screen setting (DOS mode)

The default number of screen lines in Microsoft XP is 50 and under XP you may need to make one of the following adjustments:

Run the DOS mode in a Windows (press ALT-ENTER if necessary). Click on the icon in the upper left hand corner and in the screen properties change the screen buffer size height to 25 lines.

Or in the ADV.BAT add this line:

```
MODE CON:COLS=80 LINES=25
```

This can be done as follows:

(1) Bring up NOTEPAD (Programs --> Accessories --> Notepad)

(2) Click on File then Open and then retrieve the ADV.BAT file that exists in the application where Advanced Accounting is installed - probably C:\ADV50 or C:\ADV51. You can browse to it or just type in the path, e.g. C:\ADV50\ADV.BAT.

(3) Edit ADV.BAT as follows:

Right BEFORE the line that says TPC50 BKMENU add this line:

```
MODE CON:COLS=80 LINES=25
```

So your entire batch file might look something like this (new line is added is in bold):

```
echo off
cls
echo.
echo          Loading ADVANCED ACCOUNTING 5.1
```



```
echo.  
set tas50=  
MODE CON:COLS=80 LINES=25  
tpc50 bkmenu  
SET TASEXT=
```

The key is to have the MODE statement before the TPC50 statement.

- (4) Save the ADV.BAT - click on File then Save.
- (5) Exit NOTEPAD. Now try running the application.

## 5.18 DOS mode FILES= settings

The FILES= setting needs to be adjusted in every operating system released by Microsoft to date:

### **MS-DOS, WIN 3.1, WIN 95, WIN 98 (thru 2nd edition)**

Edit CONFIG.SYS (create one if necessary in the root directory of each PC) to contain a FILES=150 statement. One way to edit CONFIG.SYS on Windows based systems is to click on start then run and then type SYSEDIT and click on OK.

### **WIN 98ME**

The [386Enh] section of the SYSTEM.INI file needs to include the following line:

```
PerVMFiles=150
```

### **NT/2000/XP**

The file that you must edit is at C:\WINNT\SYSTEM32\CONFIG.NT. (Exception: for XP Home, the file is located at C:\WINDOWS\SYSTEM32\CONFIG.NT). Change the default of FILES=40 to FILES=150 (or if there is no FILES= statement, then add a FILES=150. Upon making this change, you do not need to re-boot, simply exit any running instances of Advanced Accounting and then re-enter the program.

## 5.19 Spool 32 errors

Spool 32 is a common printing error under WIN 95 and WIN 98 (including ME), a number of third party sites report that by adding the following to WIN.INI can help reduce the incidence of this problem:

```
[windows]  
run=  
load=c:\windows\system\spool32.exe
```

Or load spool32.exe in the start-up folder.

Other possible/troubleshooting options:

- Disable print spooling
- Change spool data format from EMF to RAW
- Uninstall any recently installed printer/scanner drivers
- Use a newer or different printer driver (try also a universal print driver)
- Change ECP printer ports to standard ports (see MS Q141919)

See also MS Q191949.

To the extent that a spool 32 error causes a system crash, it is conceivable that data file corruption could result.

## 5.20 Desktop icons

For the DOS mode, the target file should be ADV.BAT. In the "Program" tab be sure to click on "Close on exit."

For the Windows mode, the target file must be TP5WIN.EXE.

## 5.21 Printing delay

If you are printing to a network printer and are experiencing a printing delay (the print job will immediately start only if you exit the software), you can tell the printer not to spool or make one of the following adjustments:

### WIN 3.1/95/98

Change the settings in your SYSTEM.INI (WIN 3.1 or WIN95/98 PC's) to include the following:

```
[Network]
PrintBufTime=1
```

```
[ifsmgr]
PrintBufTime=1
```

If you already have a [Network] section just add the PrintBufTime line to it. If you do not have a [Network] section, add it after your [386Enh] or equivalent section. Under WIN 3.1 you may have to remove the network protocol and re-add it if you receive a network protocol error. After saving these changes, re-boot your PC before they will take effect. An easy way to edit your SYSTEM.INI is to select RUN and then type SYSEDIT. You will need to do this to every PC on your network that prints to a redirected (non-local) printer.

### NT/2000/XP

In WIN NT server/workstation (and presumably the same for 2000/XP), there is a Virtual DOS Machine (VDM) related registry entry that determines the wait or timeout period when printing from a DOS VDM based print job. The LPT\_Timeout value entry (type REG\_SZ) in:

HKEY\_LOCAL\_MACHINE\SYSTEM\CurrentControlSet\Control\WOW

determines the wait time. The default value is 15 seconds. Presumably the value should be set to 1 although experimentation may indicate some value between 1 and 15. This change would need to be made to every NT workstation on the network.

## 5.22 Accessing data outside of system

The standard versions of Crystal Reports (at least thru version 7) previously provided the easiest way to access the data outside of Advanced Accounting however this requires a set of DDF (FILE.DDF, FIELD.DDF and INDEX.DDF) which have historically been provided with the software. A cumulative, updated set of DDF's has been added to the 2001 runtime installation (January 17, 2002). A set of DDF's need to be placed in each data directory that you wish to access in this manner.

It is possible to access the data files using ODBC however that will become user with future versions. It is not advisable however to import data into Advanced Accounting via ODBC and data corruption could result.

Note that the very nature of the DDF files could lead to a security problem/issue, i.e. they could provide someone with access to your data. Users who may be concerned about that may want to delete the DDF files. (The DDF files are in no way required to run Advanced Accounting.)

## 5.23 Linux

Advanced Accounting 5.1 is capable of running under Linux or Linux can be used as a file server for Advanced Accounting data files. Please contact us for further information.

## 5.24 BSERVER/BREQUEST

There is a specific issue involving Brequest and updating data file structures for which there is a solution. If you are running Brequest, please contact us before running/installing any updates. The issue specifically has to do with data files involved shared file layouts and there is a different of the "TASMERGE" program that must be used.